

WARDRAY PREMISE

MR Accessories



MR2501



MR2503



MR2504



MR2505



MR2506



MR2508



MR2508D



MR3005



MRCT450



MR2530



MR2521-3



MR2520



MR2525



MR4502



MR4503



MR4504



MR4504/S



Introduction

Thank you for purchasing this MR Conditional product. Manufactured and tested to the highest standards it is guaranteed MR Conditional to 7.0T.

Our products are manufactured by Wardray Premise Ltd at our UK based factory to BS EN ISO 13485.

**Manufacturing address:
Wardray Premise Limited, Northern Regional Office, Unit 2,
Springvale Works, Elland Road,
Brighouse, West Yorkshire, HD6 2RN, UK**

To ensure that you obtain maximum benefit from your product, please take a few minutes to read the enclosed information regarding operation, service and maintenance.

If you have any problems in the meantime or would like any advice about this or any other products from the Wardray Premise range, please contact us at our **Head Office**:

**Wardray Premise Limited, Hampton Court Estate, Summer Road,
Thames Ditton, Surrey, KT7 0SP, UK**

Tel: +44 (0) 20 8398 9911

Fax: +44 (0) 20 8398 8032

E-mail: sales@wardray-premise.com

Kindly note:

If you modify a Wardray Premise product you will invalidate your warranty.

Unless you have our express written permission to modify a product, we transfer all liabilities for modified products to you.

EU Authorised Representative:

Advena Ltd
Tower Business Centre
2nd Floor, Tower Street
Swatar
BKR 4013
Malta

Safety Definitions for MRI as Defined by International Standard F2503

MR SAFE:



An item that poses no known hazards resulting from exposure to any MR environment. MR SAFE items are composed of materials that are electrically non-conductive, non-metallic, and non-magnetic.

MR CONDITIONAL:



An item with demonstrated safety in the MR environment within defined conditions including conditions for the static magnetic field, the time-varying gradient magnetic fields and the radiofrequency fields.

Supplementary marking – additional information that, in association with marking as “MR CONDITIONAL,” states via additional language the conditions in which an item can be used safely within the MR environment.

MR UNSAFE:



An item which poses unacceptable risks to the patient, medical staff or other persons within the MR environment.

Index

Page	5 -	MR2501 - Instrument Trolley with drawer
Page	6 -	MR2503 - Overcouch Instrument Trolley
Page	7 -	MR2504 - Single Step Stool MR2505 - Double Step Stool with handrail MR2506 - Double Step Stool without handrail
Page	8 -	MR3005 - Waste Bins
Page	9 -	MR2508 - Linen Stand MR2508D - Double Linen Stand
Page	10 -	MR2530 - Drug Administration Trolley
Page	12 -	MR2520 - Utility Trolley with drawers MR2521/3 - Utility Trolley with shelves
Page	13 -	MR2525 - Lockable Utility Trolley MRCT450 Coil Trolley
Page	14 -	MR4502 - Surgeons Stool with Arm and Back Rests MR4503 - Surgeons Stool with Back Rest MR4504 - Surgeons Stool without Arm or Back Rests MR4504/S - Surgeons Stool with Saddle seat
Page	15 -	Braked Castor Operation
Page	16 -	General Maintenance
Page	17 -	Warranty Registration Form

MR2501 INSTRUMENT TROLLEY

Specification

The MR2501 is designed to be MR Conditional for use up to and including 7.0 Tesla and is manufactured and tested to the highest standards.

Please only use the unit for the purpose it was intended.

The MR2501 Instrument trolley comes with two shelves and a drawer as shown below.



Maximum load: 20 Kg each shelf
Maximum load: per plastic drawer 5 Kg

MR2503 OVERCOUCH INSTRUMENT TROLLEY

Specification

The MR2503 is designed to be MR Conditional for use up to and including 7.0 Tesla and is manufactured and tested to the highest standards.

Please only use the unit for the purpose it was intended.

Operating Instructions

To adjust the height of the tray, unlock the adjusting screw and lift to the height required, when height attained lock the adjusting screw.

Maximum height 1400mm / Minimum height 950mm



Maximum load: Do not load the tray with more than 11 Kg

MR2504 / MR2505 / MR2506 STEP STOOLS

Specification

The MR2504, MR2505 and MR2506 are designed to be MR Conditional for use up to and including 7.0 Tesla and are manufactured and tested to the highest standards.

Please only use the unit for the purpose it was intended.

The MR2504 is a single step stool (Fig 1),

The MR2505 is a double step stool with left hand side handrail (Fig 2) The handrail for the MR2505 can be allocated on the right or the left hand side at the time of ordering.

The MR2506 is a double step stool without handrail (Fig 3)

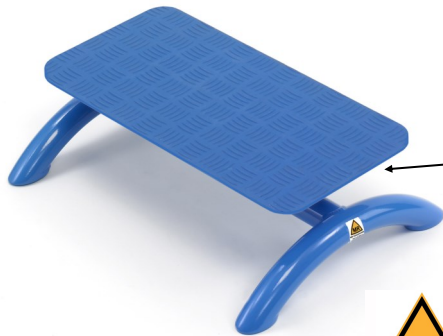


Fig 1

Unit weight 5.4 Kg



Fig 3

Unit weight 10.2 Kg



Fig 2

Unit weight 12 Kg



Maximum load: 220 Kg patient

MR3005 WASTE BINS

Specification

The MR3005 is designed to be MR conditional for use up to and including 7.0 Tesla and is manufactured and tested to the highest standards.

Please only use the unit for the purpose it was intended.

The features for this product include the following:

- It has a hands free operation to assist with infection control procedures. To open the bin lid, using your foot, press the pedal in the centre of the base. The lid will close when your foot is removed from the pedal.
- Silent closing lid.
- 2 rear wheels to assist in moving the bin.
- Lids are available in yellow, black, orange and blue (as shown).
- Wipe clean bag grab.
- MR Conditional to 7.0T.
- 30 litre (MR3005/30) or 65 litre (MR3005/65) capacity.
- This product is Fire Retardant.

Empty bin weight 30Ltr = 5.5 Kg

Empty bin weight 65Ltr = 8.5 Kg

Maximum weights: 1Ltr = 1 Kilo

Max 30Kg in 30 litre capacity bin (MR3005/30)

Max 65 Kg in 65 litre capacity bin (MR3005/65)

2 people are required to safely move the unit if fully laden.



MR2508 LINEN STAND & MR2508D DOUBLE LINEN STAND

Specification

The MR2508 (Fig 1) and MR2508D (Fig 2) are designed to be MR Conditional for use up to and including 7.0 Tesla and are manufactured and tested to the highest standards.

Please only use these units for the purpose intended.



Fig 1



Fig 2

(sack not included)



Maximum load per bag 10 Kg

MR2530 DRUG ADMINISTRATION TROLLEY

Specification

The MR2530 (Fig 1) is designed to be MR Conditional for use up to and including 7.0 Tesla and is manufactured and tested to the highest standards.

Please only use the unit for the purpose it was intended.

The MR2530 is constructed in aluminium has four drawers and a three sided top shelf. The locking design locks all four drawers at once using one key. The cabinet is secured by ensuring the locking front panel is engaged and the key turned to lock (Fig 2).

To open, turn the key and fold the securing locking panel backwards (Fig 3).

It has four 100mm diameter braking castors with 140mm buffers. To engage the brakes place your foot on the front part of the brake lever and push down (Fig 4). To release the brake place your foot on the rear part of the brake lever and press down (Fig 5).

It also has an accessory rail (Fig 6) for IV Pole and Oxygen cylinder holder (sold separately).



Fig 1

WARDRAY PREMISE



Fig 2

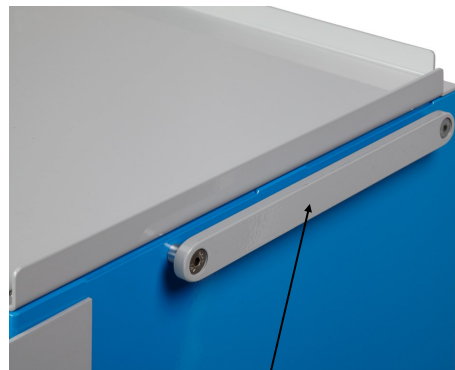


Fig 3



Brake Lever
Fig 4

Brake Lever Release
Fig 5



Accessory Rail
Fig 6



**Maximum load: per drawer 10 Kg.
Maximum load: top shelf 20 Kg.
2 people are required to safely move the unit if fully laden.**

MR2520 / MR2521/3 UTILITY TROLLEYS

Specification

The MR2520 and MR2521/3 are designed to be MR Conditional for use up to and including 7.0 Tesla and are manufactured and tested to the highest standards.

Please only use the unit for the purpose it was intended.

The MR2520 (Fig 1) Standard Utility trolley comes with 6 x 75mm deep drawers and a 2mm aluminium grey powder coated top as standard.

The MR2520 (not shown) Special Utility Trolley comes with either of the following draw depths 150mm, 200mm and 300mm or any combination of the 3, which must be specified when the order is placed.

The MR2521/3 (Fig 2) Utility Trolley comes with 3 x 2mm aluminium grey powder coated shelves as standard.

Also available with 6 shelves: MR2521/6 (not shown) Utility Trolley with 6 x 2mm aluminium grey powder coated shelves as standard.

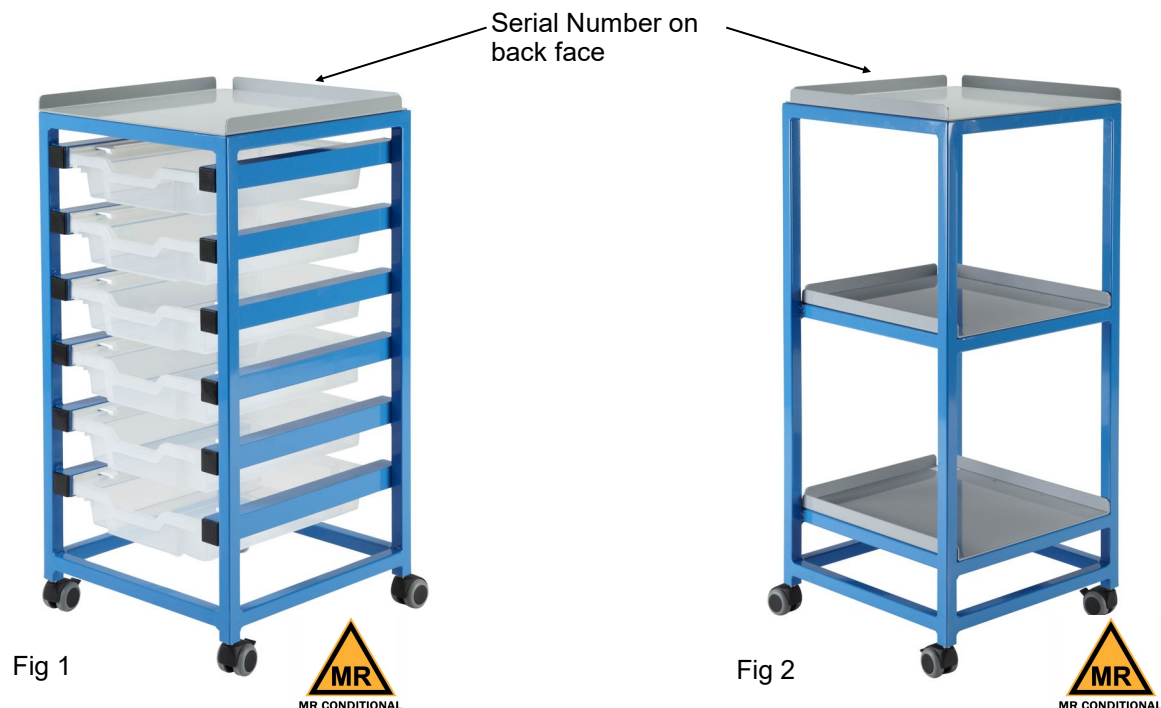


Fig 1



Fig 2



**Maximum load: per plastic drawer 5 Kg.
Maximum load: top shelf 20 Kg.**

Maximum load: per shelf 20 Kg.

WARDRAY PREMISE

MR2525

The MR2525 is designed to be MR Conditional for use up to and including 7.0 Tesla and are manufactured and tested to the highest standards.

Please only use the unit for the purpose it was intended.

The MR2525 Utility trolley comes with 6 x 75mm deep drawers and a 2mm aluminium grey powder coated top as standard. It has a Perspex, lockable front (2 keys supplied) and the sides and back are enclosed.

It has a side rail with adjustable IV pole and an oxygen cylinder holder.



MRCT450 COIL TROLLEY

Made from powder coated aluminium the coil trolley has lockable rolling castors and can safely transport coils to and from an MRI suite.

It is possible to have the trolley powder coated in a different RAL colour. Please contact our sales department for further details.

If the trolley is fully laden assess if it is safe to manoeuvre or whether additional help is required.

Always try to **push** rather than **pull** where possible. When negotiating a slope or ramp, get help from another worker.



MR4502 / MR4503 / MR4504 / MR4504/S SURGEONS STOOLS

Specification

The MR4502 / MR4503 / MR4504 / MR4504/S are designed to be MR conditional for use up to and including 7.0 Tesla and are manufactured and tested to the highest standards.

Please only use the unit for the purpose it was intended.

The MR4502 (Fig 1) is a surgeons stool with back and arm rests.

The MR4503 (Fig 2) is a surgeons stool with back.

The MR4504 (Fig 3) is a surgeons stool with no arm or back rests.

The MR4504/S (Fig 4) is a surgeons stool with ergonomically designed saddle seat to improve posture.

Operating Instructions

The height is adjusted by rotating the stool seat in an anti-clockwise direction, to lower simply rotate the seat in a clockwise direction.

Serial Numbers are located on the tube



Fig 1



Fig 2



Fig 3



Fig 4



Maximum user weight 150 Kg.

Armrests are for comfort only and are not weight bearing.

BRAKED CASTOR OPERATION

Specification

The following items are fitted with braked castors:

MR2501 / MR2502 Instrument Trolleys have 2 braking castors and 2 non-braking.

MR2503 Overcouch Instrument Trolley has 2 braking castors and 2 non-braking.

MR2508 / MR2508D Linen and Double Linen Stands have 2 braking castors and 2 non-braking.

MR2530 Drug Administration Cabinet has 4 braking castors.

MR2520 / MR2521/3 / MR2525 Utility Trolleys have 2 braking castors and 2 non-braking.

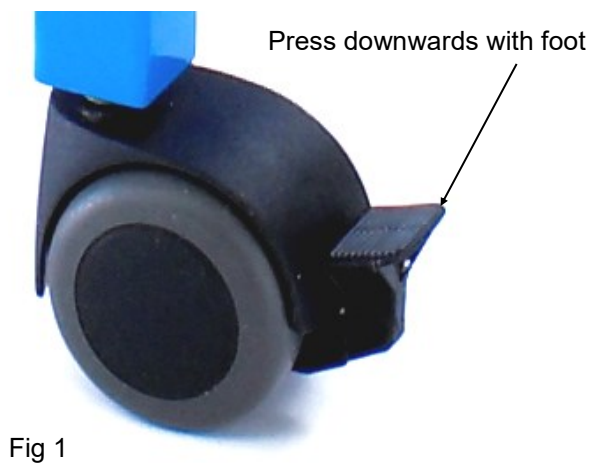
MRCT450 Coil Trolley has 2 braking castors and 2 non-breaking.

MR4502 / MR4503 / MR4504 / MR4504/S Surgeons Stools have 2 braking castors and 3 non-braking.

Operating Instructions

To engage the brake on the castor, firmly press the lever downwards with your foot (see Fig 1).

To release the brake on the castor, use your foot to lift the lever upwards (see Fig 2).



General Maintenance

It is advisable that each product is regularly inspected for signs of wear, damage or faults eg:

- Check castors for free movement and locking, check for, and remove debris that may have become caught in the brake and around the axle. This is a common occurrence and can lead to a shortened life expectancy of the castors if left unattended.
- Check drawers for free movement.
- Check locks operate correctly.
- Ensure any hand rails are secure eg; the Double Step Stool.
- Inspect any welded joints for signs of damage.
- Ensure fittings eg: bolts are not loose.

Cleaning

This product should be washed with a disposable cloth wrung out in a solution of warm water and detergent. The product should be rinsed with warm water and dried thoroughly with paper towels.

If required the product can be washed down with hand hot sodium hypochlorite solution up to 1% or 10000 parts per million chlorine combined with a detergent. Alternatively, follow your local guidelines or instructions.

If any of the above give cause for concern, please contact your Wardray Premise service provider.

EU Declarations of Conformity and Magnetic Testing

Documentation is available upon request

Please register your product with us, via the Warranty Registration Form (see page 17), for ease of contact in case of urgent upgrades or recalls.

If the unit is damaged please do not attempt to repair as this could invalidate your warranty and could compromise its MR integrity and therefore safety, please call or email Wardray Premise Limited:

T: +44 (0) 20 8398 9911

F: +44 (0) 20 8398 8032

E-MAIL: sales@wardray-premise.com

Please include the product code and the product's serial number when contacting Wardray Premise.



Wardray Premise Limited
Hampton Court Estate
Summer Road Thames Ditton
Surrey KT7 0SP
UK

Tel: +44 (0)20 8398 9911

Fax: +44 (0)20 8398 8032

e-mail: sales@wardray-premise.com

Website: www.wardray-premise.com

WARRANTY REGISTRATION FORM

To receive full warranty cover on your equipment, please complete and return this form at your earliest convenience

Reply e-mail: sales@wardray-premise.com

Reply Fax: +44 (0)20 8398 8032

Name:	
Job Title:	
Company:	
Address:	
Telephone:	
Fax:	
Email:	
Product Code/ Description:	
Product Serial/ Reference No:	
Please enter date Product received:	

If your department currently has any other Wardray Premise Ltd. equipment, which is not already covered under a service contract, please contact Servicing-Admin@wardray-premise.com to discuss an all-inclusive package.

If you would like any further information or would like to be contacted regarding any of our products, please add your enquiry to the box below.