



PearlFit Positioning Aids

Today, patient positioning aids in the field of radiology need to meet constantly growing demands in terms of hygiene and durability. On the one hand the spread of MRSA and other germs lead to more comprehensive hygiene requirements and especially positioning aids need to be examined for cracks and tears very carefully on a regular basis. On the other hand, given the high cost pressure in health care, positioning aids should get cheaper and should be more durable at the same time.

For comfortable, stable and hygienic patient positioning



<< At our facility, positioning aids are being used for various applications and unfortunately our staff as well as our patients seem to challenge quality and durability under extreme circumstances. The PearlFit positioning aids cope with these stress tests extremely well, seem to be indestructible and are super-simple to clean and disinfect. >>

Public Hospital

Benefits

Stable positioning without pressure points

- Gentle adaptation to patients' anatomy

High Durability

- High-quality manufacture using tear-resistant materials

Excellent Hygiene

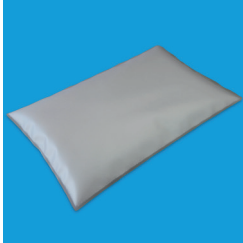
- Durable surface allows easy cleaning without residue using 70% alcohol

Versatile fields of application

- Can be used for radiological examinations inside and outside of field of view

Product Overview

PearlFit positioning aids are available in various sizes and shapes and can be used for stable but yet comfortable patient positioning. They can be used inside and outside the field of view during all radiological procedures.



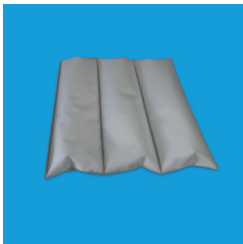
PearlFit Cushion

- 30 x 20 x 4 cm
- 50 x 30 x 7 cm
- 50 x 30 x 10 cm
- 50 x 20 x 4 cm
- 130 x 60 x 10 cm



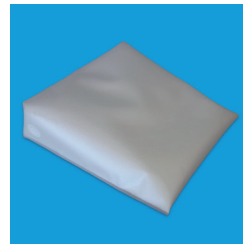
PearlFit Roll

- Ø = 18, L = 40 cm
- Ø = 18, L = 50 cm



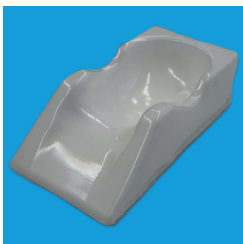
PearlFit Flex

- 6 chambers:
90 x 50 x 5 cm
- 3 chambers:
90 x 50 x 7 cm



PearlFit Wedge

- 26 x 25 x 7 cm



PearlFit Head/Neck

- stable head support in supine position
- Vacuum version available



PearlFit Forehead

- comfortable head support in prone position



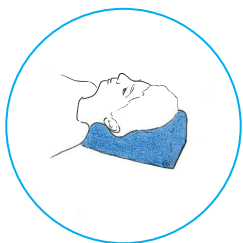
PearlFit Inlay

- Head: for all common head-coils and -holders



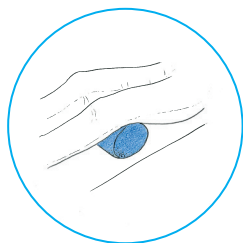
Customized solutions upon request

Usage examples



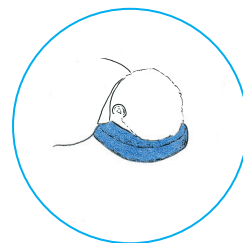
PearlFit Head

Stable and comfortable support of patient's head in supine position



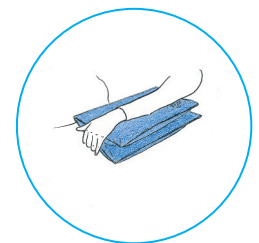
PearlFit Roll

Used in hollow of the knee for the relief of back musculature in supine position



PearlFit Forehead

Stable and comfortable support of patient's head in prone position



PearlFit Flex

Universally applicable during a broad range of imaging procedures