

# FMT

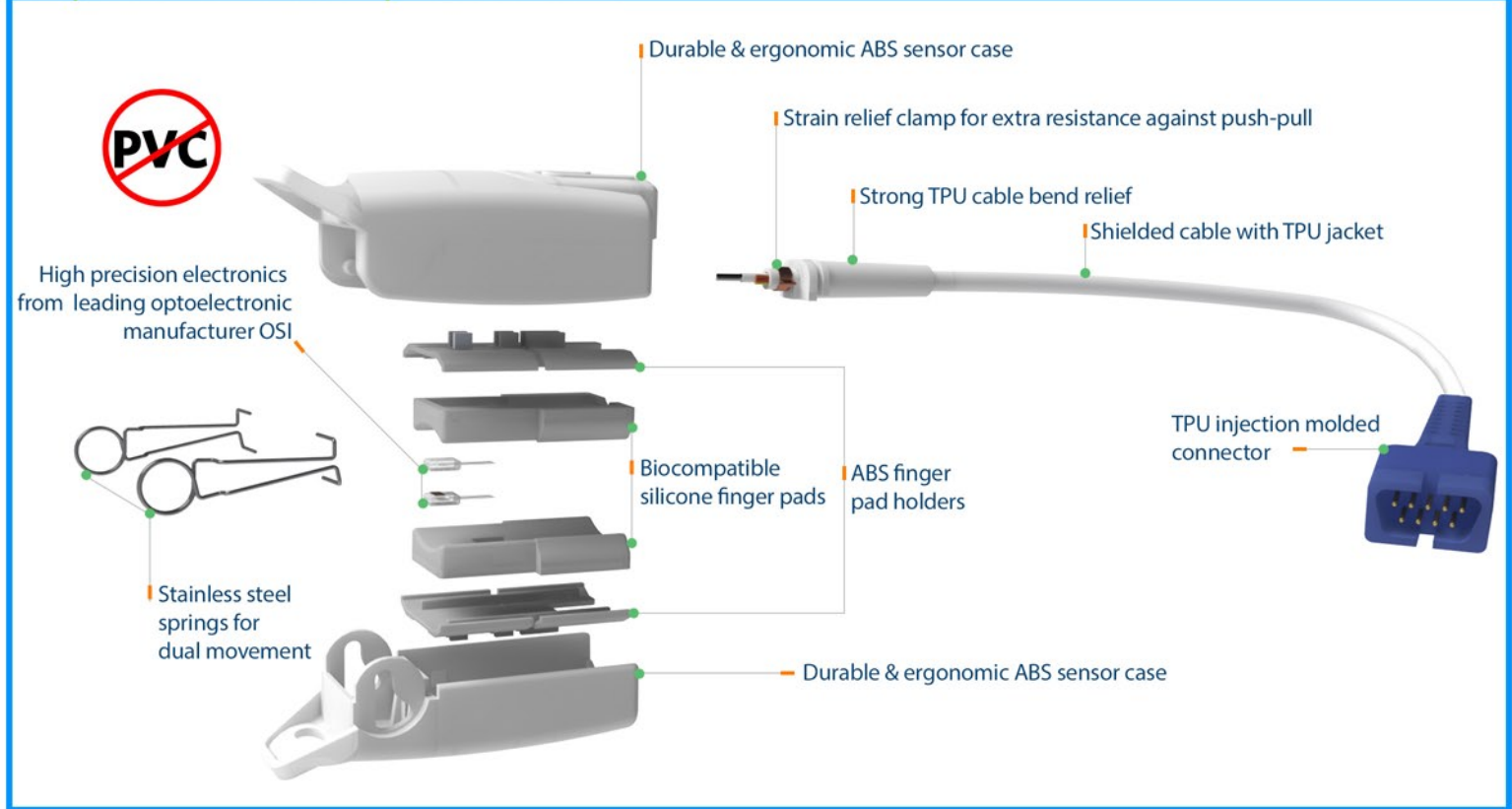
Medical Sensors, Cables and Accessories



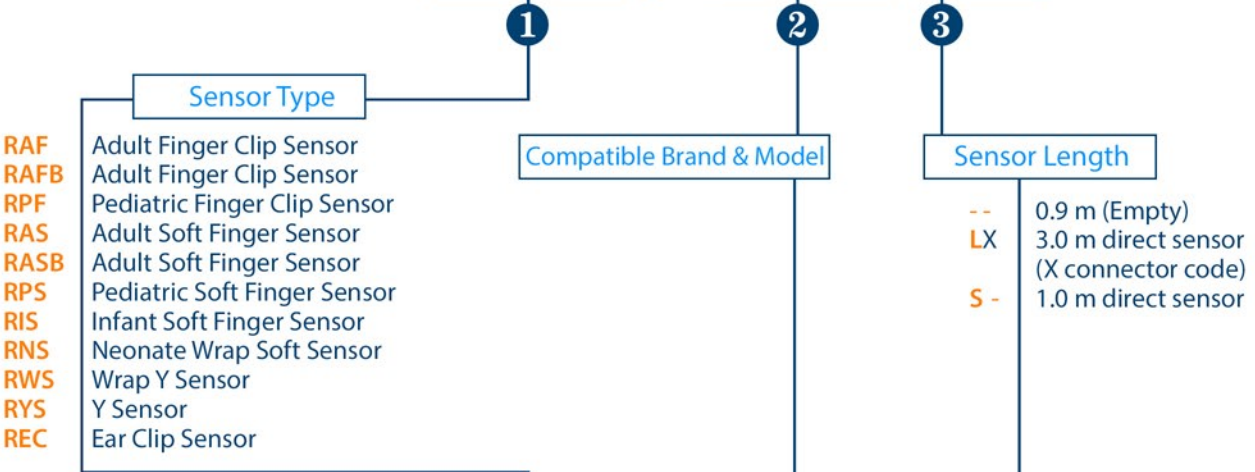
# PULSE OXIMETRY SENSORS



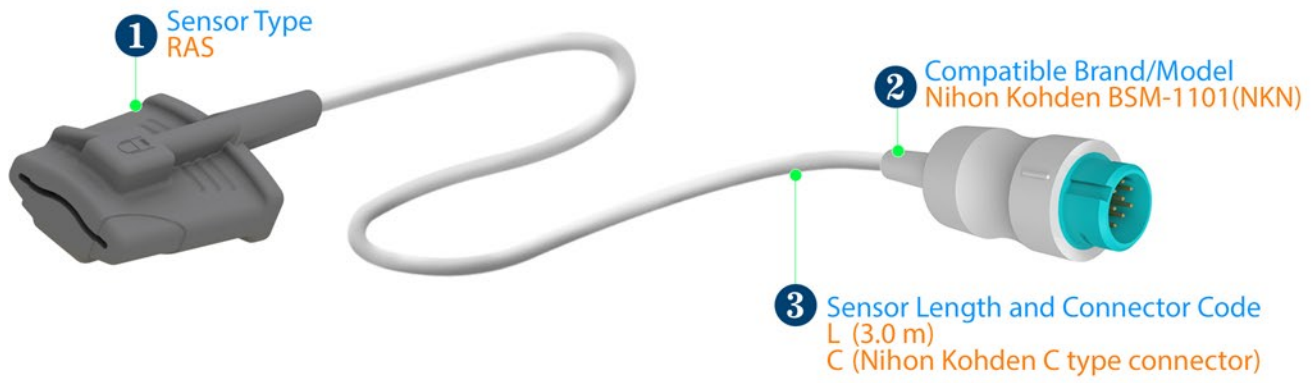
Why FMT Reusable SpO2 Sensors?



FMT-XXX / XXX-XX



FMT-RAS / NKN-LC



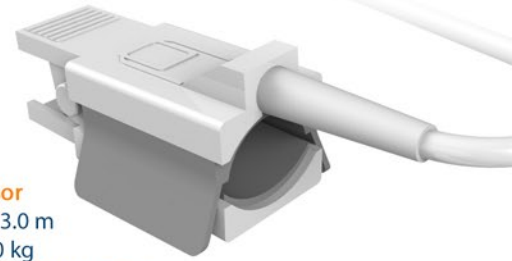
# Pulse Oximetry Sensors

Sensor Types

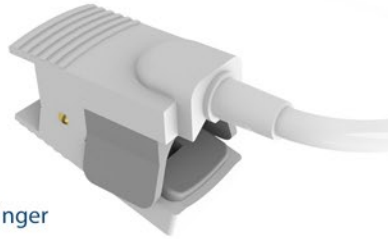
**RAF**  
**Adult Finger Clip Sensor**  
 Cable Length: 0.9 m or 3.0 m  
 Application: Adult > 40 kg  
 Application Site: Index or other finger



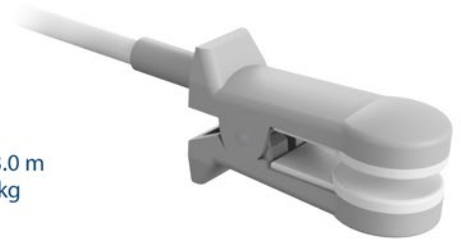
**RAF (B)**  
**Adult Finger Clip Sensor**  
 Cable Length: 0.9 m or 3.0 m  
 Application: Adult > 40 kg  
 Application Site: Index or other finger



**RPF**  
**Pediatric Finger Clip Sensor**  
 Cable Length: 0.9 m or 3.0 m  
 Application: Pediatric 10 - 40 kg  
 Application Site: Index or other finger



**REC**  
**Ear Clip Sensor**  
 Cable Length: 0.9 m or 3.0 m  
 Application: Adult > 40 kg  
 Application Site: Ear



**RAS**  
**Adult Soft Finger Sensor**  
 Cable Length: 0.9 m or 3.0 m  
 Application: Adult > 40 kg  
 Application Site: Index or other finger



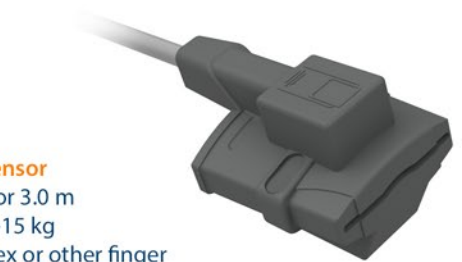
**RAS (B)**  
**Adult Soft Finger Sensor**  
 Cable Length: 0.9 m or 3.0 m  
 Application: Adult > 40 kg  
 Application Site: Index or other finger



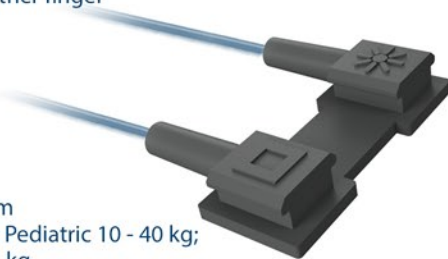
**RPS**  
**Pediatric Soft Finger Sensor**  
 Cable Length: 0.9 m or 3.0 m  
 Application: Pediatric 10 - 40 kg  
 Application Site: Index or other finger



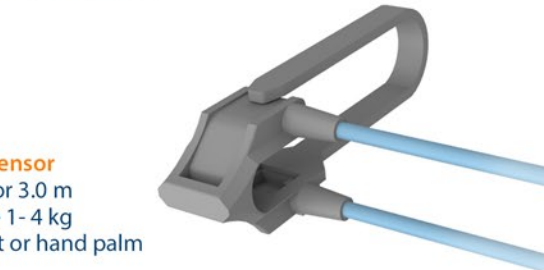
**RIS**  
**Infant Soft Finger Sensor**  
 Cable Length: 0.9 m or 3.0 m  
 Application: Infant 3-15 kg  
 Application Site: Index or other finger



**RWS**  
**Wrap Y Sensor**  
 Cable Length: 0.9 m or 3.0 m  
 Application: Adult > 40 kg; Pediatric 10 - 40 kg;  
 Infant 3-15 kg; Neonate 1- 4 kg  
 Application Site: Adult and Pediatric : Index or other finger /  
 Infant: great toe / Neonate : foot



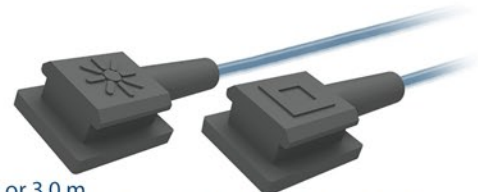
**RNS**  
**Neonate Wrap Soft Sensor**  
 Cable Length: 0.9 m or 3.0 m  
 Application: Neonate 1- 4 kg  
 Application Site: Foot or hand palm



**ECLP-01**  
 Ear clip for RYS



**RYS**  
**Y Sensor**  
 Cable Length: 0.9 m or 3.0 m  
 Application: Adult > 40 kg; Pediatric 10 - 40 kg; Infant 3- 15 kg;  
 Neonate 1- 4 kg  
 Application Site: Adult and Pediatric : Index or other finger /  
 Infant : great toe / Neonate : foot or hand palm





▼ Brands & Models

▼ Technology

▼ Monitor Side Connector

▼ Sensor Connector

**Acendis**

APM 3000

OXIMAX



Adapter & Extension Cable: **AEC-5263 (2.4 m)**



Sensor: **FMT-XXX/NLO (0.9 m)**

**Adecon**

DK7000/8000/8000D/8000L/8000M/8000N /8000S

NELLCOR



Adapter & Extension Cable: **AEC-5242 (2.4 m)**



Sensor: **FMT-XXX/NLC (0.9 m)**

NELLCOR



Direct Connect Sensor: **FMT-XXX/ADC-L (3.0 m)**

**Armstrong**

AD 900, 1000, 2000, 3000, 4000

BCI



Adapter & Extension Cable: **AEC-5105 (2.4 m)**



Sensor: **FMT-XXX/BCI (0.9 m)**

**Baxter**

Explorer, Monarch

NELLCOR



Adapter & Extension Cable: **AEC-5104 (2.4 m)**



Sensor: **FMT-XXX/NLC (0.9 m)**

**BCI**

BCI



Adapter & Extension Cable: **AEC-5105 (2.4 m)**



Sensor: **FMT-XXX/BCI (0.9 m)**

3040/3100/3101/3300/3301/3302/3303/3304/3401, 9100/9200, Advisor, Autocorr, Fingerprint, Mini Torr/Plus

BCI



Adapter & Extension Cable: **AEC-5133 (2.4 m)**



Sensor: **FMT-XXX/BCI (0.9 m)**

6100 , 9100 SERENA

BCI



Direct Connect Sensor: **FMT-XXX/BCI-LR (3.0 m)**

**Biolight**

M6, M12

BIOLIGHT



Direct Connect Sensor: **FMT-XXX/BLT-LR (3.0 m)**

AnyView A2/2E/3/5/6/8, Q3/5/7, V6, M7000/8500

DIGITAL



Adapter & Extension Cable: **AEC-5230 (2.4 m)**



Sensor: **FMT-XXX/BLT (0.9 m)**

DIGITAL



Direct Connect Sensor: **FMT-XXX/BLT-LC (3.0 m)**



# Pulse Oximetry Sensors

Compatible Brands & Models

▼ Brands & Models

▼ Technology

▼ Monitor Side Connector

▼ Sensor Connector

## Biolight

M9500

DIGITAL



Adapter & Extension Cable: **AEC-5249 (2.4 m)**



Sensor: **FMT-XXX/BLT (0.9 m)**

DIGITAL



Direct Connect Sensor: **FMT-XXX/BLT-LV (3.0 m)**

## Biolight

M8000A/9000/9000A

DIGITAL



Adapter & Extension Cable: **AEC-5172 (2.4 m)**



Sensor: **FMT-XXX/NTG (0.9 m)**

DIGITAL



Direct Connect Sensor: **FMT-XXX/CNC-LR (3.0 m)**

## Bionet

BM 3, BM 3 Plus, BM3 Wide

NELCOR



Adapter & Extension Cable: **AEC-5120 (2.4 m)**



Sensor: **FMT-XXX/NLC (0.9 m)**

BM 5

NELCOR



Adapter & Extension Cable: **AEC-5151 (2.4 m)**



Sensor: **FMT-XXX/NLC (0.9 m)**

## Biosys

BPM 200/700, Guardian, Sentry-NS.

NELCOR



Adapter & Extension Cable: **AEC-5104 (2.4 m)**



Sensor: **FMT-XXX/NLC (0.9 m)**

BPM 300

NELCOR



Adapter & Extension Cable: **AEC-5135 (2.4 m)**



Sensor: **FMT-XXX/NLC (0.9 m)**

NELCOR



Direct Connect Sensor: **FMT-XXX/BYS-L (3.0 m)**

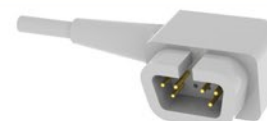
## Bird

4400

CSI



Adapter & Extension Cable: **AEC-5146 (2.4 m)**



Sensor: **FMT-XXX/CRT (0.9 m)**

CSI



Direct Connect Sensor: **FMT-XXX/CRT-LL (3.0 m)**

# Pulse Oximetry Sensors

Compatible Brands & Models

▼ Brands & Models

▼ Technology

▼ Monitor Side Connector

▼ Sensor Connector

## Bruker / Odam

ALL

BCI



Adapter & Extension Cable: **AEC-5141 (2.4 m)**

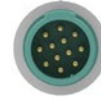


Sensor: **FMT-XXX/BCI (0.9 m)**

BCI



Direct Connect Sensor: **FMT-XXX/BRC-L (3.0 m)**



## Burdick Spacelabs

100, PRO2

BCI



Adapter & Extension Cable: **AEC-5105 (2.4 m)**



Sensor: **FMT-XXX/BCI (0.9 m)**

## Cardiac Science

Diascope G2

NELCOR



Adapter & Extension Cable: **AEC-5186 (2.4 m)**



Sensor: **FMT-XXX/NLC (0.9 m)**

5300/5350

OXIMAX



Adapter & Extension Cable: **AEC-5149 (2.4 m)**



Sensor: **FMT-XXX/NLO (0.9 m)**

Lifepak 12/15/20

MASIMO



Adapter & Extension Cable: **AEC-5225 (2.4 m)**



Sensor: **FMT-XXX/MSM (0.9 m)\***

MASIMO



Adapter & Extension Cable: **AEC-5215 (2.4 m)**



Sensor: **FMT-XXX/MSD (0.9 m)\***

## Cardioline

VSign 200

NELCOR



Adapter & Extension Cable: **AEC-5266 (2.4 m)**



Sensor: **FMT-XXX/NLC (0.9 m)**

NELCOR



Direct Connect Sensor: **FMT-XXX/CRD-L (3.0 m)**



## Choice

MD 300

BCI



Adapter & Extension Cable: **AEC-5114 (2.4 m)**



Sensor: **FMT-XXX/BCI (0.9 m)**

\* Refurbished Only



▼ Brands & Models

▼ Technology

▼ Monitor Side Connector

▼ Sensor Connector

## Choice

BCI



Direct Connect Sensor: **FMT-XXX/CHC-LR (3.0 m)**

## Colin

BP88/ 306/ 508/ 808/ 885, PRESS-MATE SAT

NELCOR



Adapter & Extension Cable: **AEC-5104 (2.4 m)**

Sensor: **FMT-XXX/NLC (0.9 m)**

BP308/ 408, BX5, BX10MA

MASIMO



Adapter & Extension Cable: **AEC-5225 (2.4 m)**

Sensor: **FMT-XXX/MSM (0.9 m)\***

BP308/ 408, BX5, BX10MA

MASIMO



Adapter & Extension Cable: **AEC-5215 (2.4 m)**

Sensor: **FMT-XXX/MSD (0.9 m)\***

## Comen

C80

OXIMAX



Adapter & Extension Cable: **AEC-5228 (2.4 m)**

Sensor: **FMT-XXX/NLO (0.9 m)**

## Contec

CMS 5000/5000C/5100/6000/6800/7000/7000Plus/8000/9000, HMS 6500

DIGITAL



Adapter & Extension Cable: **AEC-5172 (2.4 m)**

Sensor: **FMT-XXX/NTG (0.9 m)**

DIGITAL



Direct Connect Sensor: **FMT-XXX/CNC-LR (3.0 m)**

P VISE

NELCOR



Adapter & Extension Cable: **AEC-5197 (2.4 m)**

Sensor: **FMT-XXX/NLC (0.9 m)**

## Corpuls

8/16

BCI



Adapter & Extension Cable: **AEC-5129 (2.4 m)**

Sensor: **FMT-XXX/BCI (0.9 m)**

3

MASIMO



Adapter & Extension Cable: **AEC-5229 (2.4 m)**

Sensor: **FMT-XXX/MSM (0.9 m)**

## Criticare (CSI)

501/503/504/507/508/581/1100, Poet Plus 8100, Poni, Scholar

CSI



Adapter & Extension Cable: **AEC-5146 (2.4 m)**

Sensor: **FMT-XXX/CRT (0.9 m)**

\* Refurbished Only



▼ Brands & Models

▼ Technology

▼ Monitor Side Connector

▼ Sensor Connector

## Criticare (CSI)

501/503/504/507/508/581/1100, Poet Plus 8100, Poni, Scholar

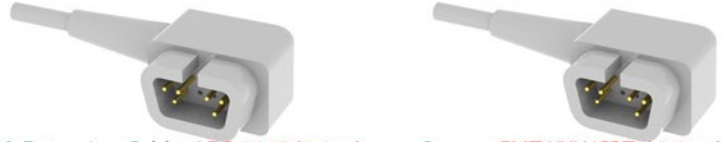
CSI



Direct Connect Sensor: **FMT-XXX/CRT-LL (3.0 m)**

503 Spot/DX, 504 DX, 506 DX NP, Mini SpO2

CSI



Adapter & Extension Cable: **AEC-5145 (2.4 m)**

Sensor: **FMT-XXX/CRT (0.9 m)**

503 Spot/DX, 504 DX, 506 DX NP, Mini SpO2

CSI



Direct Connect Sensor: **FMT-XXX/CRT-L (3.0 m)**

## CU Medical

CU-HD1 Lifegain

OXIMAX



Adapter & Extension Cable: **AEC-5268 (2.4m)**

Sensor: **FMT-XXX/NLO (0.9 m)**

## Datascope

ACCUSTAT, ACCUTOR 3 / 4 SAT, ACCUTORR PLUS, PASSPORT

DATASCOPE



Adapter & Extension Cable: **N/A**

Sensor: **FMT-XXX/DTS (0.9 m)**

DATASCOPE



Direct Connect Sensor: **FMT-XXX/DTS-L (3.0 m)**

Expert, Passport/2/2LT/V/XG, Accutorr V/Plus, Spectrum/OR, Trio, Duo, V12/21

NELLCOR



Adapter & Extension Cable: **AEC-5148 (2.4m)**

Sensor: **FMT-XXX/NLC (0.9 m)**

Expert, Passport/2/2LT/V/XG, Accutorr V/Plus, Spectrum/OR, Trio, Duo, V12/21

MASIMO



Adapter & Extension Cable: **AEC-5215 (2.4 m)**

Sensor: **FMT-XXX/MSD (0.9 m)\***

Expert, Passport/2/2LT/V/XG, Accutorr V/Plus, Spectrum/OR, Trio, Duo, V12/21

MASIMO



Adapter & Extension Cable: **AEC-5225 (2.4 m)**

Sensor: **FMT-XXX/MSM (0.9 m)\***

## Digicare

Digimax 5500

BCI



Adapter & Extension Cable: **AEC-5105 (2.4 m)**

Sensor: **FMT-XXX/BCI (0.9 m)**

\* Refurbished Only

▼ Brands & Models

▼ Technology

▼ Monitor Side Connector

▼ Sensor Connector

## Digicare

Digioxii 920, P0930, Oxitrace, Digimax

BCI



Adapter & Extension Cable: **AEC-5133 (2.4 m)**

Sensor: **FMT-XXX/BCI (0.9 m)**

BCI



Direct Connect Sensor: **FMT-XXX/BCI-LR (3.0 m)**

Digioxii 920, P0930, Oxitrace, Digimax

BCI



Adapter & Extension Cable: **AEC-5144 (2.4 m)**

Sensor: **FMT-XXX/BCI (0.9 m)**

Digioxii 920, P0930, Oxitrace, Digimax

BCI



Direct Connect Sensor: **FMT-XXX/DGC-L (3.0 m)**

Life Window 6000

BCI



Adapter & Extension Cable: **AEC-5152 (2.4 m)**

Sensor: **FMT-XXX/BCI (0.9 m)**

BCI



Direct Connect Sensor: **FMT-XXX/DLW-L (3.0 m)**

## Dixtal Biomedica

DX 405, DX 2010, DX 2020, DX 2021, DX 2022, DX 2023, DX 2405, DX 2515, DX 7100, DX 7300, DX 8100.

NOVAMETRIX  
SUPER BRIGHT



Direct Connect Sensor: **FMT-XXX/DXT (1.5 m), FMT-XXX/DXT-L (3.0 m)**

## Dolphin

2100/2150

DOLPHIN



Adapter & Extension Cable: **AEC-5153 (2.4 m)**

Sensor: **FMT-FMT-XXX/DLP (0.9 m)**

## Dräger Siemens

Oxipac 2000 / 2500

BCI



Adapter & Extension Cable: **AEC-5105 (2.4 m)**

Sensor: **FMT-XXX/BCI (0.9 m)**

Cato, Cicero EM, Evita 4, Julian, PB8800, VM1/3, RM1, Vamos PM 8010/8014/8040/8050/8060, Vitara, Vitalert 1000

NELLCOR



Adapter & Extension Cable: **AEC-5154 (2.4 m)**

Sensor: **FMT-XXX/NLC (0.9 m)**



▼ Brands & Models

▼ Technology

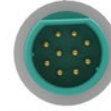
▼ Monitor Side Connector

▼ Sensor Connector

## Dräger Siemens

Micro 2, Sirecust 404-1/700/630, Sirem Module

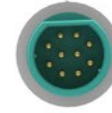
NELCOR



Adapter & Extension Cable: **AEC-5131 (2.4 m)**

Sensor: **FMT-XXX/NLC (0.9 m)**

NELCOR



Direct Connect Sensor: **FMT-XXX/SIE-L (3.0 m)**

Infinity Vista / Gamma / Kappa, Siemens, SC 5000/6000/6002/7000/8000/9000 (XL)

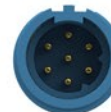
NELCOR



Adapter & Extension Cable: **AEC-5168 (1.0 m)**

Sensor: **FMT-XXX/NLC (0.9 m)**

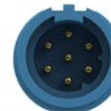
OXIMAX



Adapter & Extension Cable: **AEC-5219 (1.2 m)**

Sensor: **FMT-XXX/NLO (0.9 m)**

MASIMO



Adapter & Extension Cable: **AEC-5252 (1.2 m)**

Sensor: **FMT-XXX/MSD (0.9 m)**

## Edan

iM 50/60/70/80, iM9/9A/8/8A/8B

NELCOR



Adapter & Extension Cable: **AEC-5106 (2.4 m)**

Sensor: **FMT-XXX/NLC (0.9 m)**

M9B, M8B

OXIMAX



Adapter & Extension Cable: **AEC-5184 (2.4 m)**

Sensor: **FMT-XXX/NLO (0.9 m)**

M9B, M8B

DIGITAL



Adapter & Extension Cable: **AEC-5241 (2.4 m)**

Sensor: **FMT-XXX/NTG (0.9 m)**

Elite V5/V6/V8, iM20

NELCOR



Adaptör ve Uzatma Kablosu: **AEC-5160 (2.4 m)**

Prob: **FMT-XXX/NLC (0.9 m)**

## Emtel

FX 2000P/3000

DIGITAL



Direct Connect Sensor: **FMT-XXX/EMT-LD (3.0 m)**



▼ Brands & Models

▼ Technology

▼ Monitor Side Connector

▼ Sensor Connector

<p><b>Emtel</b></p> <p>FX 2000P/3000</p>	OXIMAX	<p>Adapter &amp; Extension Cable: <b>AEC-5247 (2.4 m)</b></p>	<p>Sensor: <b>FMT-XXX/NLO (0.9 m)</b></p>
	OXIMAX	<p>Direct Connect Sensor: <b>FMT-XXX/EMT-LO (3.0 m)</b></p>	
<p>FX 3000MD</p>	OXIMAX	<p>Adapter &amp; Extension Cable: <b>AEC-5149 (2.4 m)</b></p>	<p>Sensor: <b>FMT-XXX/NLO (0.9 m)</b></p>
<p><b>Entri Medical</b></p> <p>PROPAQ 102, 104,106</p>	NELLCOR	<p>Adapter &amp; Extension Cable: <b>N/A</b></p>	<p>Sensor: <b>FMT-XXX/NLC (0.9 m)</b></p>
<p><b>Fukuda Denshi</b></p> <p>HG302 module, DS5100E, DS5300, DS5300W</p>	NELLCOR	<p>Adapter &amp; Extension Cable: <b>AEC-5104 (2.4 m)</b></p>	<p>Sensor: <b>FMT-XXX/NLC (0.9 m)</b></p>
<p><b>Getemed</b></p> <p>VitalGuard</p>	NELLCOR	<p>Adapter &amp; Extension Cable: <b>AEC-5148 (2.4 m)</b></p>	<p>Sensor: <b>FMT-XXX/NLC (0.9 m)</b></p>
<p><b>GE Corometrics</b></p> <p>188, 129, 128, 128F, 129F, 511, 556</p>	NELLCOR	<p>Adapter &amp; Extension Cable: <b>AEC-5104 (2.4 m)</b></p>	<p>Sensor: <b>FMT-XXX/NLC (0.9 m)</b></p>
<p>188, 129, 511, 556</p>	OHMEDA	<p>Direct Connect Sensor: <b>N/A</b></p>	
<p><b>GE Critikon / Dinamap</b></p> <p>Dinamap 8700 / 8710 / 8720, Dinamap Plus, OxyShuttle 1/2</p>	CRITIKON	<p>Direct Connect Sensor: <b>N/A</b></p>	
<p>Dinamap 9700, 9710, 9720, Dinamap PLUS, Compact, MPS, PRO 300 / 400.</p>	NELLCOR	<p>Adapter &amp; Extension Cable: <b>AEC-5104 (2.4 m)</b></p>	<p>Sensor: <b>FMT-XXX/NLC (0.9 m)</b></p>

▼ Brands & Models

▼ Technology

▼ Monitor Side Connector

▼ Sensor Connector

## GE Critikon / Dinamap

Dinamap OxyTrak 8280 1846SX

CRITIKON



Direct Connect Sensor: N/A

## GE Datex

S/5, AS/3, CS/3, CH S/2S/RS, CG 2S/2CS, Cardio Cap 1/2/5, Capnomac Ultima, Light, M series modules, Oscar 2, OSP200, Satlite Trans/Plus II, Ult SVI/SVO/SIO/SOO.

DATEX



Adapter & Extension Cable: AEC-5111 (2.4 m)



Sensor: FMT-XXX/DTX (0.9 m)

GE



Adapter & Extension Cable: AEC-5187 (2.4 m)



Sensor: FMT-XXX/OXY (0.9 m)

GE



Adapter & Extension Cable: AEC-5204 (2.4 m)



Sensor: FMT-XXX/OXN (0.9 m)

DATEX



Direct Connect Sensor: FMT-XXX/DTX-L (3.0 m)

## GE Datex Ohmeda

E series module i4 modular S5 monitors Corometrics 259, Dinamap V100, Carescape B650/V100, B20/30/40.

GE



Adapter & Extension Cable: AEC-5188 (2.4 m)



Sensor: FMT-XXX/OXY (0.9 m)

GE



Adapter & Extension Cable: AEC-5202 (2.4 m)



Sensor: FMT-XXX/OXN (0.9 m)

GE



Direct Connect Sensor: FMT-XXX/GOX-L (3.0 m)

## GE Dinamap

DINAMAP PRO series V1, PRO1000V2

NELLCOR



Adapter & Extension Cable: AEC-5148 (2.4 m)



Sensor: FMT-XXX/NLC (0.9 m)



# Pulse Oximetry Sensors

Compatible Brands & Models

▼ Brands & Models

▼ Technology

▼ Monitor Side Connector

▼ Sensor Connector

## GE Dinamap

Procare, Pro series V2, ProMap, Pro300/1000/1000V3

OXIMAX



Adapter & Extension Cable: **AEC-5149 (2.4 m)**

Sensor: **FMT-XXX/NLO (0.9 m)**

Dinamap Compact, MPS

OXIMAX



Adapter & Extension Cable: **AEC-5140 (2.4 m)**

Sensor: **FMT-XXX/NLO (0.9 m)**

Expert, Passport/2/2LT/V/XG, Accutorr V/Plus, Spectrum/OR, Trio, Duo, V12/21

MASIMO



Adapter & Extension Cable: **AEC-5225 (2.4 m)**

Sensor: **FMT-XXX/MSM (0.9 m)\***

MASIMO



Adapter & Extension Cable: **AEC-5215 (2.4 m)**

Sensor: **FMT-XXX/MSD (0.9 m)\***

## GE Hellige

Hellige SMU, SMK, Eagle 1000/2000/3000, CardioServ

NELCOR



Adapter & Extension Cable: **AEC-5159 (2.4 m)**

Sensor: **FMT-XXX/NLC (0.9 m)**

## GE Marquette

Eagle 1000/3000/4000, Dash 2000/3000/5000, Solar 8000, Tram Module 450SL/451/851, Corometrics 120/2120, MacLab, Responder 3000.

NELCOR



Adapter & Extension Cable: **AEC-5161 (2.4 m)**

Sensor: **FMT-XXX/NLC (0.9 m)**

NELCOR



Direct Connect Sensor: **FMT-XXX/MRQ-L (3.0 m)**

Dash 2500/4000/5000, Solar 8000i, Tram Module 451N/851N, Corometrics 250 series.

OXIMAX



Adapter & Extension Cable: **AEC-5163 (2.4 m)**

Sensor: **FMT-XXX/NLO (0.9 m)**

OXIMAX



Direct Connect Sensor: **FMT-XXX/MRQ-LO (3.0 m)**

MASIMO



Adapter & Extension Cable: **AEC-5162 (2.4 m)**

Sensor: **FMT-XXX/MSD (0.9 m)\***

\* Refurbished Only



▼ Brands & Models

▼ Technology

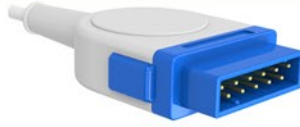
▼ Monitor Side Connector

▼ Sensor Connector

## GE Marquette

Dinamap, Procare, Pro Serisi V2, Pro 1000V3, Dash 2500/3000/4000/5000, Solar 8000M, Tram Modül 451M/851M.

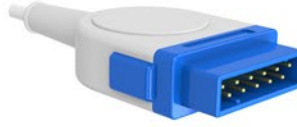
MASIMO



Adapter & Extension Cable: **AEC-5217 (2.4 m)**

Sensor: **FMT-XXX/MSM (0.9 m)\***

MASIMO



Direct Connect Sensor: **FMT-XXX/MRQ-LM (3.0 m)**

## GE Ohmeda

Ohmeda 3700/3710/3770/3775/3800/3900, OxiCap 5250 RGM, Biox 3740/3760/3800/4700, Rascal 2, OxiTip Plus, TuffSat.

OHMEDA



Adapter & Extension Cable: **AEC-5190 (2.4 m)**

Sensor: **FMT-XXX/OXY (0.9 m)**

OHMEDA



Adapter & Extension Cable: **AEC-5205 (2.4 m)**

Sensor: **FMT-XXX/OXN (0.9 m)**

OHMEDA



Direct Connect Sensor: **FMT-XXX/OHM-L (3.0 m) FMT-XXX/OHM-S (1.0 m)**

Ohmeda 3700/3710/3770/3775/3800/3900, OxiCap 5250 RGM, Biox 3740/3760/3800/4700, Rascal 2, OxiTip Plus, TuffSat.

Marquette 7000 serisi, TRAM/AR, Modüler X00SL serisi

Ohmeda Trusat, Trusat TD

GE



Adapter & Extension Cable: **AEC-5189 (2.4 m)**

Sensor: **FMT-XXX/OXY (0.9 m)**

GE



Adapter & Extension Cable: **AEC-5201 (2.4 m)**

Sensor: **FMT-XXX/OXN (0.9 m)**

## GE Ohmeda

GE



Direct Connect Sensor: **FMT-XXX/TRS-L (3.0 m)**

## Generra PaceTech

Vitalmax 4000 Series, 710B

NELLCOR



Adapter & Extension Cable: **AEC-5119 (2.4 m)**

Sensor: **FMT-XXX/NLC (0.9 m)**

NELLCOR



Adapter & Extension Cable: **N/A**

Sensor: **FMT-XXX/NLC (0.9 m)**

▼ Brands & Models

▼ Technology

▼ Monitor Side Connector

▼ Sensor Connector

**Generra PaceTech**

VITALMAX 200, 300, 400, 530, 710, 800 series

NELLCOR



Adapter & Extension Cable: **AEC-5108 (2.4 m)**



Sensor: **FMT-XXX/NLC (0.9 m)**

**Goldway**

UT4000A/F/A Pro/F Pro

BCI



Adapter & Extension Cable: **AEC-5134 (2.4 m)**



Sensor: **FMT-XXX/BCI (0.9 m)**

BCI



Direct Connect Sensor: **FMT-XXX/GLD-LL (3.0 m)**

BCI



Adapter & Extension Cable: **AEC-5132 (2.4 m)**



Sensor: **FMT-XXX/BCI (0.9 m)**

BCI



Direct Connect Sensor: **FMT-XXX/ GLD-LR (3.0 m)**

OXIMAX



Adapter & Extension Cable: **AEC-5121 (2.4 m)**



Sensor: **FMT-XXX/NLO (0.9 m)**

**Guoteng**

GT9000E/B/F/M, GT9003B/F/M, Q5

NELLCOR



Adapter & Extension Cable: **AEC-5143 (2.4 m)**



Sensor: **FMT-XXX/NLC (0.9 m)**

**Guoteng**

GT9000E/B/F/M, GT9003B/F/M, Q5

GUOTENG



Direct Connect Sensor: **FMT-XXX/ GTG-LR (3.0 m)**



**HealForce**

Prince 100F, Classic 90, Deluxe 70, Vital Sign Monitor.

DIGITAL



Direct Connect Sensor: **FMT-XXX/PRN-LR (3.0 m)**



**Healthdyne**

ALL

NONIN



Adapter & Extension Cable: **AEC-5191 (2.4 m)**



Sensor: **FMT-XXX/NON (0.9 m)**

▼ Brands & Models

▼ Technology

▼ Monitor Side Connector

▼ Sensor Connector

## Huntleigh

Smartsigns Compact 1000

DOLPHIN



Adapter & Extension Cable: **AEC-5153 (2.4 m)**

Sensor: **FMT-XXX/DLP (0.9 m)**

## Infinium

Omni, Omni II, Omni III, Omni (K), Omni Express, Omni Express VS

DIGITAL



Adapter & Extension Cable: **AEC-5203 (2.4 m)**

Sensor: **FMT-XXX/NTG (0.9 m)**

DIGITAL



Direct Connect Sensor: **FMT-XXX/IFM-L (3.0 m)**

## Innomed

Oxycard, Innocare-T

NELCOR



Adapter & Extension Cable: **AEC-5104 (2.4 m)**

Sensor: **FMT-XXX/NLC (0.9 m)**

NONIN



Adapter & Extension Cable: **AEC-5191 (2.4 m)**

Sensor: **FMT-XXX/NON (0.9 m)**

Innocare-S, Innocare-T12

NELCOR



Adapter & Extension Cable: **AEC-5101 (2.4 m)**

Sensor: **FMT-XXX/NLC (0.9 m)**

## Invicare

ALL

BCI



Adapter & Extension Cable: **AEC-5105 (2.4 m)**

Sensor: **FMT-XXX/BCI (0.9 m)**

## Invivo - MDE

4500 Plus, 4500 Plus /1/2/3/, Millennia, Omega14 45, Omni-Trak, TVS, Sat Scout, Scout ES.

NELCOR



Adapter & Extension Cable: **AEC-5170 (2.4 m)**

Sensor: **FMT-XXX/NLC (0.9 m)**

INVIVO



Direct Connect Sensor: **FMT-XXX/INV-L (3.0 m)**

MDE Escort M8, M12

MASIMO



Adapter & Extension Cable: **AEC-5208 (2.4 m)**

Sensor: **FMT-XXX/MSM (0.9 m)\***



▼ Brands & Models

▼ Technology

▼ Monitor Side Connector

▼ Sensor Connector

## Invivo - MDE

Escort 100 OPT11A, Escort 300A, Escort II OPT 30, Prism

NELCOR



Adapter & Extension Cable: **AEC-5104 (2.4 m)**

Sensor: **FMT-XXX/NLC (0.9 m)**

## Ivy Biomedical

405A, 405D

NELCOR



Adapter & Extension Cable: **N/A**

Sensor: **FMT-XXX/NLC (0.9 m)**

405P, 405T

NELCOR



Adapter & Extension Cable: **AEC-5104 (2.4 m)**

Sensor: **FMT-XXX/NLC (0.9 m)**

SAT-Guard IVY2000, 405TM, 405CM

MASIMO



Adapter & Extension Cable: **AEC-5225 (2.4 m)**

Sensor: **FMT-XXX/MSM (0.9 m)\***

## Konica Minolta

Pulsox-300, Pulsox-300i and Check Sensore SP5C

MINOLTA



Direct Connect Sensor: **FMT-XXX/MMH (0.9 m)\***

## Kontron

7840/7845/7137, Micromon, Minimon, Supermon, Kolormon Trakmon

BCI



Adapter & Extension Cable: **AEC-5109 (2.4 m)**

Sensor: **FMT-XXX/BCI (0.9 m)**

## Kontron

7840/7845/7137, Micromon, Minimon, Supermon, Kolormon Trakmon

BCI



Direct Connect Sensor: **FMT-XXX/KNT-L (3.0 m)**

7840/7845/7137, Micromon, Minimon, Supermon, Kolormon, Trakmon

NELCOR



Adapter & Extension Cable: **AEC-5139 (2.4 m)**

Sensor: **FMT-XXX/NLC (0.9 m)**

OXIMAX



Adapter & Extension Cable: **AEC-5158 (2.4 m)**

Sensor: **FMT-XXX/NLO (0.9 m)**

▼ Brands & Models

▼ Technology

▼ Monitor Side Connector

▼ Sensor Connector

<p><b>Ktmed</b></p> <p>KTPM 1010/1020/1030/1040/1050/1060/2002, Angelus</p>	<p>NELCOR</p>	<p>Adapter &amp; Extension Cable: <b>AEC-5175 (2.4 m)</b></p>	<p>Sensor: <b>FMT-XXX/NLC (0.9 m)</b></p>
<p><b>Larsen &amp; Toubro</b></p> <p>Galaxy</p>	<p>NELCOR</p>	<p>Adapter &amp; Extension Cable: <b>AEC-5198 (2.4 m)</b></p>	<p>Sensor: <b>FMT-XXX/NLC (0.9 m)</b></p>
<p><b>Lohmeier</b></p> <p>ALL</p>	<p>LOHMEIER</p>	<p>Direct Connect Sensor: <b>FMT-XXX/LHM (1.2 m) FMT-XXX/LHM-L (3.0)</b></p>	
<p><b>Magna</b></p> <p>MON-MTEK 30, 33, 35, 40, 80, 85, 1200, 1201, 1300, 1401, 1406, 1411, 1413, 1501, 1503, MOD02, MOD03</p>	<p>BCI</p>	<p>Adapter &amp; Extension Cable: <b>AEC-5105 (2.4 m)</b></p>	<p>Sensor: <b>FMT-XXX/BCI (0.9 m)</b></p>
<p><b>Masimo</b></p> <p>ALL</p>	<p>MASIMO</p>	<p>Adapter &amp; Extension Cable: <b>AEC-5225 (2.4 m)</b></p>	<p>Sensor: <b>FMT-XXX/MSM (0.9 m)*</b></p>
<p><b>Masimo</b></p> <p>ALL</p>	<p>MASIMO</p>	<p>Direct Connect Sensor: <b>FMT-XXX/MSM-L (3.0 m)*</b></p>	
<p><b>MedAir</b></p> <p>Lifesense, Pulssense</p>	<p>BCI</p>	<p>Adapter &amp; Extension Cable: <b>AEC-5105 (2.4 m)</b></p>	<p>Sensor: <b>FMT-XXX/MSD (0.9 m)*</b></p>
<p><b>Mediana</b></p> <p>YM-2002 series</p>	<p>NELCOR</p>	<p>Adapter &amp; Extension Cable: <b>AEC-5104 (2.4 m)</b></p>	<p>Sensor: <b>FMT-XXX/NLC (0.9 m)</b></p>



# Pulse Oximetry Sensors

Compatible Brands & Models

▼ Brands & Models

▼ Technology

▼ Monitor Side Connector

▼ Sensor Connector

## Medlab

NANOX2

BCI



Adapter & Extension Cable: **AEC-5105 (2.4 m)**



Sensor: **FMT-XXX/BCI (0.9 m)**

P-OX100, P-OX100L

BCI



Adapter & Extension Cable: **AEC-5194 (2.4 m)**



Sensor: **FMT-XXX/BCI (0.9 m)**

## Medsource

BPM200

NELCOR



Adapter & Extension Cable: **AEC-5104 (2.4 m)**



Sensor: **FMT-XXX/NLC (0.9 m)**

## MEK

MP 100/110/111/200S/400/500/600/1000.

MEK



Adapter & Extension Cable: **AEC-5147 (2.4 m)**



Sensor: **FMT-XXX/MEK (0.9 m)**

MP 570/700/800/2500

MEK



Adapter & Extension Cable: **AEC-5157 (2.4 m)**



Sensor: **FMT-XXX/MEK (0.9 m)**

MEK



Direct Connect Sensor: **FMT-XXX/MEK-LD (3.0 m)**

MP1200

MEK



Adapter & Extension Cable: **AEC-5177 (2.4 m)**



Sensor: **FMT-XXX/MEK (0.9 m)**

## MEK

MP1200

MEK



Direct Connect Sensor: **FMT-XXX/MEK-LH (3.0 m)**

NELCOR



Adapter & Extension Cable: **AEC-5178 (2.4 m)**



Sensor: **FMT-XXX/NLC (0.9 m)**

NELCOR



Direct Connect Sensor: **FMT-XXX/MEK-LN (3.0 m)**

▼ Brands & Models

▼ Technology

▼ Monitor Side Connector

▼ Sensor Connector

## Mennen

Horizon XL (Ohmeda)

OHMEDA



Direct Connect Sensor: **FMT-XXX/OHM-L (3.0 m)**

Horizon XL/2000, Mercury 1200, MR1300, Envoy

NELCOR



Adapter & Extension Cable: **AEC-5180 (2.4 m)**

Sensor: **FMT-XXX/NLC (0.9 m)**

Envoy

NELCOR

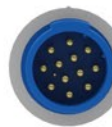


Adapter & Extension Cable: **AEC-5179 (2.4 m)**

Sensor: **FMT-XXX/NLC (0.9 m)**

Envoy, Vitalogik 4000/4500.

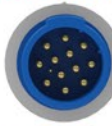
NELCOR



Adapter & Extension Cable: **AEC-5192 (2.4 m)**

Sensor: **FMT-XXX/NLC (0.9 m)**

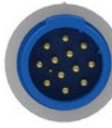
OXIMAX



Adapter & Extension Cable: **AEC-5155 (2.4 m)**

Sensor: **FMT-XXX/NLO (0.9 m)**

MASIMO



Adapter & Extension Cable: **AEC-5207 (2.4 m)**

Sensor: **FMT-XXX/MSM (0.9 m)\***

## Metrax Primedic

DM1/3/10/30, ED-210/220/230/240

NELCOR



Adapter & Extension Cable: **AEC-5107 (2.4 m)**

Sensor: **FMT-XXX/NLC (0.9 m)**

## Metrax Primedic

XD300/330/3 xe, Heart Save 6S

OXIMAX



Adapter & Extension Cable: **AEC-5118 (2.4 m)**

Sensor: **FMT-XXX/NLO (0.9 m)**

OXIMAX



Adapter & Extension Cable: **AEC-5156 (2.4 m)**

Sensor: **FMT-XXX/NLO (0.9 m)**

## Mindray

PM 6000 / 7000 / 8000 / 9000, MEC1000/1200  
2000, VS 800.

NELCOR



Adapter & Extension Cable: **AEC-5106 (2.4 m)**

Sensor: **FMT-XXX/NLC (0.9 m)**

\* Refurbished Only



# Pulse Oximetry Sensors

Compatible Brands & Models

▼ Brands & Models

▼ Technology

▼ Monitor Side Connector

▼ Sensor Connector

## Mindray

NELCOR



Direct Connect Sensor: **FMT-XXX/MND-L (3.0 m)**

OXIMAX



Adapter & Extension Cable: **AEC-5206 (2.4 m)**

Sensor: **FMT-XXX/NLO (0.9 m)**

OXIMAX



Direct Connect Sensor: **FMT-XXX/MND-LO (3.0 m)**

MASIMO



Adapter & Extension Cable: **AEC-5209 (2.4 m)**

Sensor: **FMT-XXX/MSM (0.9 m)\***

MASIMO



Adapter & Extension Cable: **AEC-5239 (2.4 m)**

Sensor: **FMT-XXX/MSD (0.9 m)\***

PM-5000 / 6000 / 8000

NELCOR



Adapter & Extension Cable: **AEC-5136 (2.4 m)**

Sensor: **FMT-XXX/NLC (0.9 m)**

PM-5000 / 6000 / 8000

MASIMO



Adapter & Extension Cable: **AEC-5210 (2.4 m)**

Sensor: **FMT-XXX/MSM (0.9 m)\***

## Mindray

BeneView T1/T5/T6/T8/T9, BeneHeart D6, iPM 9800/12/10/8, iMEC 12/10/8, VS600, VS900.

NELCOR



Adapter & Extension Cable: **AEC-5160 (2.4 m)**

Sensor: **FMT-XXX/NLC (0.9 m)**

NELCOR



Direct Connect Sensor: **FMT-XXX/MTN-L (3.0 m)**

OXIMAX



Adapter & Extension Cable: **AEC-5167 (2.4 m)**

Sensor: **FMT-XXX/NLO (0.9 m)**

OXIMAX



Direct Connect Sensor: **FMT-XXX/MTN-LO (3.0 m)**

\* Refurbished Only

# Pulse Oximetry Sensors

Compatible Brands & Models

▼ Brands & Models

▼ Technology

▼ Monitor Side Connector

▼ Sensor Connector

**Mindray**

PM 9000, MEC509B

MASIMO



Adapter & Extension Cable: **AEC-5169 (2.4 m)**



Sensor: **FMT-XXX/MSM (0.9 m)\***

MASIMO



Direct Connect Sensor: **FMT-XXX/MTN-LM (3.0 m)**

NELCOR



Adapter & Extension Cable: **AEC-5116 (2.4 m)**



Sensor: **FMT-XXX/NLC (3.0 m)**

**Nellcor**

NPB 290/295/395, N 180/390/3000/6000

NELCOR



Adapter & Extension Cable: **AEC-5148 (2.4 m)**



Sensor: **FMT-XXX/NLC (0.9 m)**

NELCOR



Direct Connect Sensor: **FMT-XXX/NLC-LN (3.0 m)**

N 550/560/595/600x

OXIMAX



Adapter & Extension Cable: **AEC-5149 (2.4 m)**



Sensor: **FMT-XXX/NLO (0.9 m)**

OXIMAX



Direct Connect Sensor: **FMT-XXX/NLO-LO (0.9 m)**

NBP 190/3940/4000

OXIMAX



Adapter & Extension Cable: **AEC-5140 (2.4 m)**



Sensor: **FMT-XXX/NLO (0.9 m)**

All not listed above

NELCOR



Adapter & Extension Cable: **AEC-5104 (2.4 m)**



Sensor: **FMT-XXX/NLC (0.9 m)**

**Nellcor**

NELCOR



Direct Connect Sensor: **FMT-XXX/NLC-L (3.0 m)**



▼ Brands & Models

▼ Technology

▼ Monitor Side Connector

▼ Sensor Connector

## NewTech Generalmed Solaris

VS-I, VS-V, Neupulse 8B

DIGITAL



Direct Connect Sensor: **FMT-XXX/PRN-LR (3.0 m)**

PM 9000A/9300

DIGITAL



Adapter & Extension Cable: **AEC-5124 (2.4 m)**

Sensor: **FMT-XXX/NTG (0.9 m)**

PM 9000A/9300

DIGITAL



Direct Connect Sensor: **FMT-XXX/NTG-LR (3.0 m)**

NT3 series

DIGITAL



Direct Connect Sensor: **FMT-XXX/NTG-L (3.0 m)**

## Nihon Kohden

AL-800PA module, Life Scope series BSM-1101/2101/  
BSM-3101/7100/7200/8200/8201/8301/8800/8800A  
OLV-1100A.

NIHON KOHDEN NIHON KOHDEN



Adapter & Extension Cable: **AEC-5235 (2.4 m)**

Sensor: **FMT-XXX/NKN (1.6 m)**



Direct Connect Sensor: **FMT-XXX/NKN-LC (3.0 m)**

AL900P module, BSM-1102, 9510, OGS-2000

NELLCOR



Adapter & Extension Cable: **AEC-5104 (2.4 m)**

Sensor: **FMT-XXX/NLC (0.9 m)**

Life Scope series BSM-2300/2301A/2351/2353/2301/ 2303  
BSM-4100/4101/4103/4111/4113/5100/5105/5135/6000  
BSM-6301K/6501K/6701K/9510/9800

NIHON KOHDEN NIHON KOHDEN



Adapter & Extension Cable: **AEC-5122 (2.4 m)**

Sensor: **FMT-XXX/NKN (1.6 m)**



Direct Connect Sensor: **FMT-XXX/NKN-L (3.0 m)**

## Nihon Kohden

OPV-1500 Life Scope N / K, Oxypal OLV2700,  
Oxypal Neo OLV-3100.

NIHON KOHDEN



Adapter & Extension Cable: **AEC-5112 (2.4 m)**

Sensor: **FMT-XXX/NKN (1.6 m)**

# Pulse Oximetry Sensors

Compatible Brands & Models

▼ Brands & Models

▼ Technology

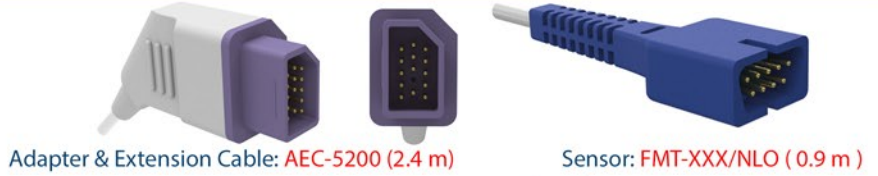
▼ Monitor Side Connector

▼ Sensor Connector

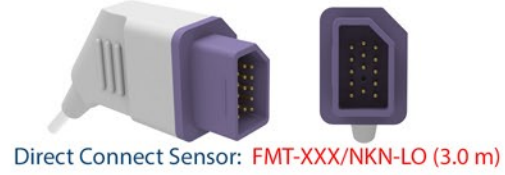
## Nihon Kohden

Life Scope TR, BSM-6000 series, BSM-6310K, BSM-6501K, BSM-6701K, AY-651P, AY-653P module.

OXIMAX



OXIMAX



NIHON KOHDEN



## Nonin

PM90, PM900A, PM9300

NONIN



## Novamatrix

505, 510, 511, 515, 515A, 515B, 515C, 520, 520A, 2001, 7000, 7100, Oxypleth

NOVAMETRIX



NOVAMETRIX



Handheld 512, 513, 710, 745

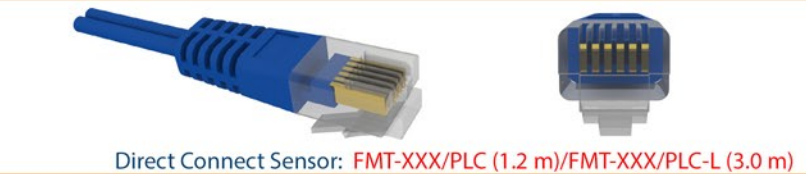
NOVAMETRIX



## Palco

300, 305, 340, 900, 960P, 5305

PALCO



## Petas

KMA 800/375/275/175, PM 100/150

NELLCOR



KMA 160/165/260/265/360/365

NELLCOR



## Philips HP

78352C, 78354C, 78834C, M1020A, M1025B, M1205A, M1350, M1722A/B, M1732A/B, M2475B, Viridia A1, Viridia A3.

NELLCOR





▼ Brands & Models

▼ Technology

▼ Monitor Side Connector

▼ Sensor Connector

**Philips HP**

M1020A, M2475B, M1732A/B, M1722A/B, 78833C, 78833A, 78834A, 78352C, 78352A

NELLCOR



Direct Connect Sensor: **FMT-XXX/HPB-L (3.0 m)**

M3, M4, MP20, MP30, MP40, MP50, MP70, MP80, VM4, VM6, VM8

PHILIPS



Adapter & Extension Cable: **AEC-5127 (2.4 m)**

Sensor: **FMT-XXX/HPS (1.0 m)**

NELLCOR



Adapter & Extension Cable: **AEC-5126 (2.4 m)**

Sensor: **FMT-XXX/NLC (0.9 m)**

PHILIPS



Direct Connect Sensor: **FMT-XXX/HPS-L (3.0 m), FMT-XXX/HPS (1.0 m)**

M1020B, M3000A/M3001A MMS, M3002A MMS X2, M8102A MP2, M8105A MP5

PHILIPS



Adapter & Extension Cable: **AEC-5128 (2.4 m)**

Sensor: **FMT-XXX/HPS (1.0 m)**

MASIMO



Adapter & Extension Cable: **AEC-5220 (2.4 m)**

Sensor: **FMT-XXX/MSM (0.9 m)\***

MASIMO



Adapter & Extension Cable: **AEC-5221 (2.4 m)**

Sensor: **FMT-XXX/MSD (0.9 m)\***

M3, M4, MP20, MP30, MP40, MP50, MP70, MP80, VM4, VM6, VM8

OXIMAX



Adapter & Extension Cable: **AEC-5223 (2.4 m)**

Sensor: **FMT-XXX/NLO (0.9 m)**

Viridia A1:M3921A, M3923A, A3:M3927A, M3929A

NELLCOR



Adapter & Extension Cable: **AEC-5104 (2.4 m)**

Sensor: **FMT-XXX/NLC (0.9 m)**

**Physio Control Medtronic**

Lifepak 12

NELLCOR



Adapter & Extension Cable: **AEC-5104 (2.4 m)**

Sensor: **FMT-XXX/NLC (0.9 m)**

\* Refurbished Only



▼ Brands & Models

▼ Technology

▼ Monitor Side Connector

▼ Sensor Connector

## Physio Control Medtronic

Lifepak 12/20/20e

MASIMO



Adapter & Extension Cable: **AEC-5225 (2.4 m)**



Sensor: **FMT-XXX/MSM (0.9 m)\***

MASIMO



Adapter & Extension Cable: **AEC-5215 (2.4 m)**



Sensor: **FMT-XXX/MSD (0.9 m)\***

## Progetti

EPG View

BCI



Adaptör & Uzatma Kablosu: **AEC-5114 (2.4 m)**



Sensor: **FMT-XXX/BCI (0.9 m)**

BCI



Direct Connect Sensor: **FMT-XXX/CHC-LR (3.0 m)**



## RGB

Omicrom FT Surveyor, Omicrom Vision, Oxydina

BCI



Adapter & Extension Cable: **AEC-5102 (2.4 m)**



Sensor: **FMT-XXX/BCI (0.9 m)**

## RisingMed

RPM 9000A/9000B/9000C

BCI



Direct Connect Sensor: **FMT-XXX/RGB-LR (3.0 m)**



NELCOR



Direct Connect Sensor: **FMT-XXX/RSD-L (3.0 m)**



## Saadat

Masimo Set olmayan tüm modeller

NELCOR



Adapter & Extension Cable: **AEC-5185 (2.4 m)**



Sensor: **FMT-XXX/NLC (0.9 m)**

Aria, Alborz B5/B9, Novin S630/S740/S1600/S1800

MASIMO



Adapter & Extension Cable: **AEC-5215 (2.4 m)**



Sensor: **FMT-XXX/MSD (0.9 m)\***

Aria, Alborz B5/B9, Novin S630/S740/S1600/S1800

MASIMO



Adapter & Extension Cable: **AEC-5225 (2.4 m)**



Sensor: **FMT-XXX/MSM (0.9 m)\***

▼ Brands & Models

▼ Technology

▼ Monitor Side Connector

▼ Sensor Connector

**Sazgan Gostar**

Vista

NOVAMETRIX



Direct Connect Sensor: **FMT-XXX/SAZ-L (3.0 m)**

**Schiller**

Oximeter OX-1, Argus Pro

MASIMO



Adapter & Extension Cable: **AEC-5215 (2.4 m)**

Sensor: **FMT-XXX/MSD (0.9 m)\***

MASIMO

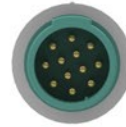


Adapter & Extension Cable: **AEC-5225 (2.4 m)**

Sensor: **FMT-XXX/MSM (0.9 m)\***

Argus LCM, Physiogard TM910

BCI



Adapter & Extension Cable: **AEC-5141 (2.4m)**

Sensor: **FMT-XXX/BCI (0.9m)**

Argus TM7, CM8

BCI



Adapter & Extension Cable: **AEC-5164 (2.4 m)**

Sensor: **FMT-XXX/BCI (0.9 m)**

NELLCOR



Adapter & Extension Cable: **AEC-5165 (2.4 m)**

Sensor: **FMT-XXX/NLC (0.9 m)**

Argus PRO, Argus LCM

NELLCOR



Direct Connect Sensor: **FMT-XXX/SHA-L (3.0 m)**

OXIMAX



Adapter & Extension Cable: **AEC-5166 (2.4 m)**

Sensor: **FMT-XXX/NLO (0.9 m)**

Argus TM7, CM8

MASIMO



Adapter & Extension Cable: **AEC-5196 (2.4 m)**

Sensor: **FMT-XXX/MSD (0.9 m)\***

MASIMO



Adapter & Extension Cable: **AEC-5216 (2.4 m)**

Sensor: **FMT-XXX/MSM (0.9 m)\***



# Pulse Oximetry Sensors

Compatible Brands & Models

▼ Brands & Models

▼ Technology

▼ Monitor Side Connector

▼ Sensor Connector

## Spacelabs

1050, 1600, 1700, 90369, 90469, 91220-B, 904, 96, Ultraview ve Ultraview SL

NELLCOR



Adapter & Extension Cable: **AEC-5174 (2.4 m)**

Sensor: **FMT-XXX/NLC (0.9 m)**

OXIMAX



Adapter & Extension Cable: **AEC-5227 (2.4m)**

Sensor: **FMT-XXX/NLO (0.9 m)**

90303B, 90309, 90351-0/6, 90465, 0466, 90489, 90651A-08, 90651-A, IM77, 90308, Scout

NELLCOR



Adapter & Extension Cable: **AEC-5150 (2.4 m)**

Sensor: **FMT-XXX/NLC (0.9 m)**

NELLCOR



Direct Connect Sensor: **FMT-XXX/SPL-L (3.0 m)**

90343/91343/96218 telemetry transmitters

NELLCOR



Adapter & Extension Cable: **AEC-5240 (0.6 m)**

Sensor: **FMT-XXX/NLC (0.9 m)**

## Spengler

Monica 200/2000

NELLCOR



Adapter & Extension Cable: **AEC-5176 (2.4 m)**

Sensor: **FMT-XXX/NLC (0.9 m)**

## S&W

Artema Diascope 2, Gamme 8000

NELLCOR



Adapter & Extension Cable: **AEC-5113 (2.4 m)**

Sensor: **FMT-XXX/NLC (0.9 m)**

NELLCOR



Direct Connect Sensor: **FMT-XXX/SW-L (3.0 m)**

Athena 9050, 9060

OHMEDA



Direct Connect Sensor: **FMT-XXX/AT-L (3.0 m)**

## Triton

MP6-03 AX/RX/TX

NELLCOR



Adapter & Extension Cable: **AEC-5234 (2.4 m)**

Sensor: **FMT-XXX/NLC (0.9 m)**

NELLCOR



Direct Connect Sensor: **FMT-XXX/TRT-L (3.0 m)**

▼ Brands & Models

▼ Technology

▼ Monitor Side Connector

▼ Sensor Connector

**Utas**  
UM 300 - 10 / 15

OXIMAX



Adapter & Extension Cable: **AEC-5255 (2.4m)**

Sensor: **FMT-XXX/NLO (0.9 m)**

**Üzümcü**  
Visio Mod

OXIMAX



Adapter & Extension Cable: **AEC-5238 (2.4 m)**

Sensor: **FMT-XXX/NLO (0.9 m)**

Visio

OXIMAX



Adapter & Extension Cable: **AEC-5243 (2.4 m)**

Sensor: **FMT-XXX/NLO (0.9 m)**

**Vitalog**  
HEPSİ

CSI



Adapter & Extension Cable: **AEC-5146 (2.4 m)**

Sensor: **FMT-XXX/CRT (0.9 m)**

CSI



Direct Connect Sensor: **FMT-XXX/CRT – LL (3.0 m)**

**Welch Allyn**  
Propaq 206-EL, 204-EL, 202-EL, 106- EL

NELCOR



Adapter & Extension Cable: **AEC-5104 (2.4 m)**

Sensor: **FMT-XXX/NLC (0.9 m)**

Propaq 242

OXIMAX



Adapter & Extension Cable: **AEC-5140 (2.4 m)**

Sensor: **FMT-XXX/NLO (0.9 m)**

PIC 30, PIC 40 & PIC 50

OXIMAX



Adapter & Extension Cable: **AEC-5212 (1.2 m)**

Sensor: **FMT-XXX/NLO (0.9 m)**

**Zoll**  
Basic M & AED serisi

MASIMO



Adapter & Extension Cable: **AEC-5225 (2.4 m)**

Sensor: **FMT-XXX/MSM (0.9 m)\***

MASIMO

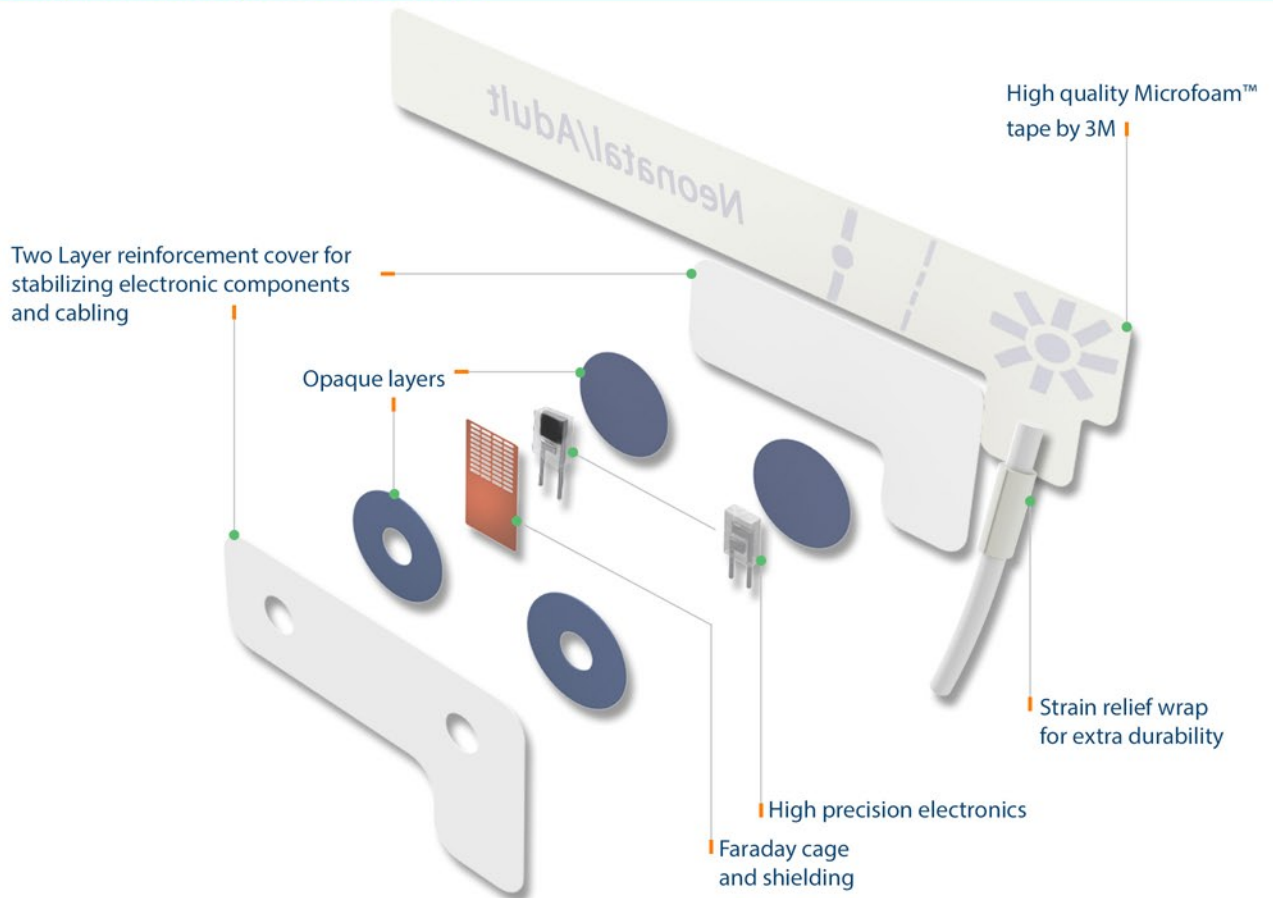


Adapter & Extension Cable: **AEC-5215 (2.4 m)**

Sensor: **FMT-XXX/MSD (0.9 m)\***



## Why FMT Disposable SpO2 Sensors?



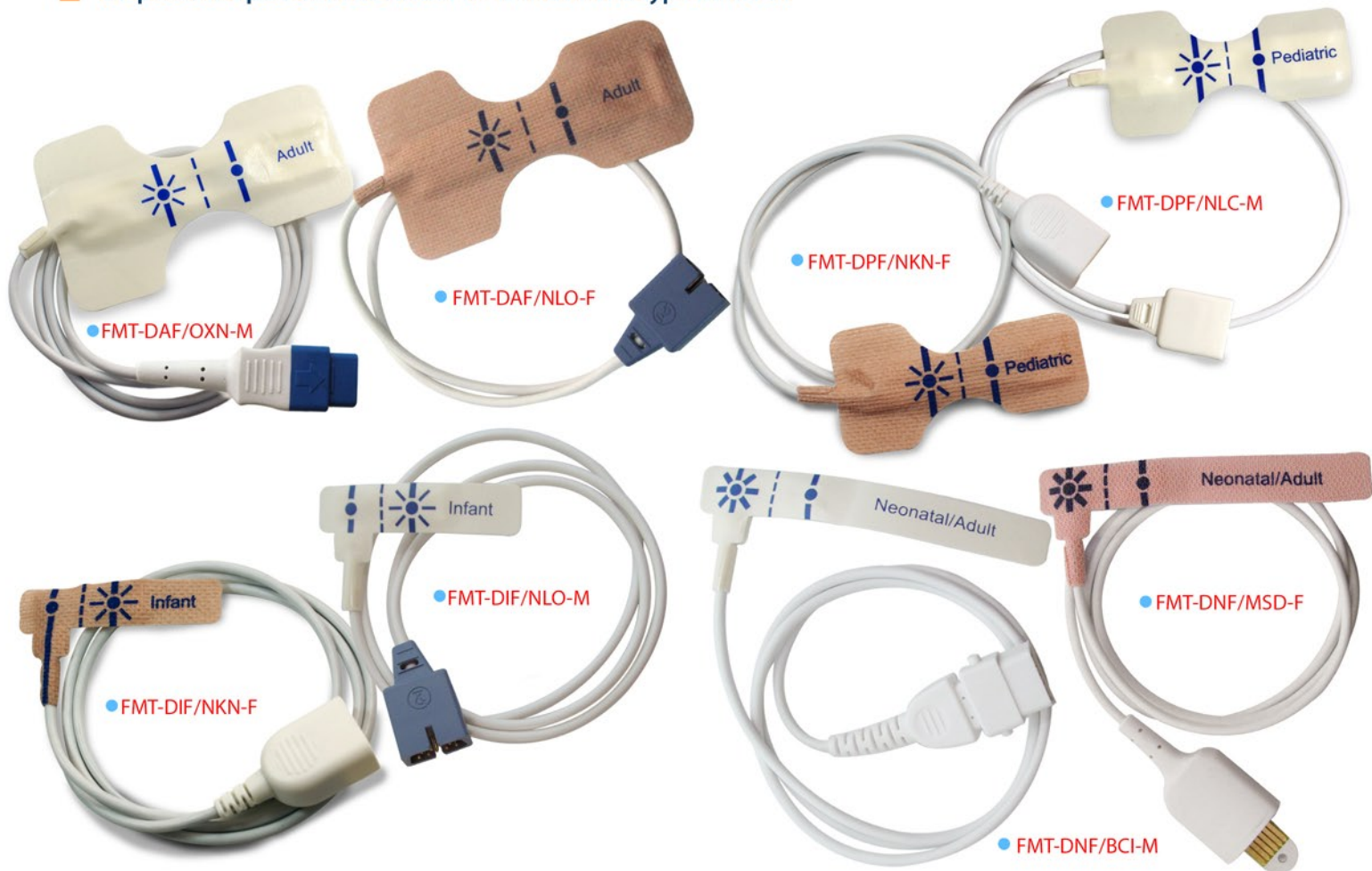
### ■ Features

- Ideal for extended monitoring or minimizing the risk of infection where the risk of cross-contamination is high.
- Special design that ensures easy and accurate sensor placement and functionality.
- Made of flexible shielded cable, high accuracy electronic components.
- 3M Microfoam™ foam type or Medaplast™ fabric type adhesive materials.  
These adhesive materials with medium adhesion maximize patient comfort and allow the sensor to be easily moved and quickly reapplied when repositioning.
- Four sizes of comfortable and accurate disposable sensors designed to fit adult, pediatric, infant and neonatal patients. They are compatible with major leading manufacturers of patient monitoring and pulse oximetry systems.
- High signal accuracy. Accuracy is  $\pm 2\%$  between 70%-100%, below 70% unspecified.  
Added Faraday cage and shielding feature reduces the effect of magnetic interference from the environment and increases the accuracy of the measurement. All disposable sensors have two different layers of opaque material, covering electronic components for minimizing effects of ambient light.
- Provide accurate measurements for mobile patients, patients with low perfusion and low body temperature.

Sold in 24 pieces per pack.

Latex-free and meet industry standards for biocompatibility.

## Disposable SpO2 Sensors with Foam and Fabric type material



▼ Sensor Type	▼ Patient Type	▼ Patient Weight	▼ Cable Length	▼ Preferred Application Area
FMT-DAF/XXX-Y	Adult	>40 kg	45 cm	Index Finger
FMT-DPF/XXX-Y	Pediatric	10-50 kg	45 cm	Index Finger
FMT-DIF /XXX-Y	Infant	3-20 kg	90 cm	Big Toe
FMT-DNF/XXX-Y	Neonatal/Adult	<3 kg or >40 kg	90 cm	Lateral aspect of foot or Index finger ( for adult)

▼ Compatible Brand	▼ Adult	▼ Pediatric	▼ Infant	▼ Neonatal / Adult
BCI*	FMT-DAF / BCI - Y	FMT-DPF / BCI - Y	FMT-DIF / BCI - Y	FMT-DNF / BCI - Y
Criticare(CSI)*	FMT-DAF / CSI - Y	FMT-DPF / CSI - Y	FMT-DIF / CSI - Y	FMT-DNF / CSI - Y
Datex*	FMT-DAF / DTX - Y	FMT-DPF / DTX - Y	FMT-DIF / DTX - Y	FMT-DNF / DTX - Y
GE OxyTip (UN Connector)*	FMT-DAF / OXY - Y	FMT-DPF / OXY - Y	FMT-DIF / OXY - Y	FMT-DNF / OXY - Y
GE TruSignal*	FMT-DAF / OXN - Y	FMT-DPF / OXN - Y	FMT-DIF / OXN - Y	FMT-DNF / OXN - Y
MEK*	FMT-DAF / MEK - Y	FMT-DPF / MEK - Y	FMT-DIF / MEK - Y	FMT-DNF / MEK - Y
Masimo (LNCS)*	FMT-DAF / MSM - Y	FMT-DPF / MSM - Y	FMT-DIF / MSM - Y	FMT-DNF / MSM - Y
Masimo (LNOP)*	FMT-DAF / MSD - Y	FMT-DPF / MSD - Y	FMT-DIF / MSD - Y	FMT-DNF / MSD - Y
Nellcor	FMT-DAF / NLC - Y	FMT-DPF / NLC - Y	FMT-DIF / NLC - Y	FMT-DNF / NLC - Y
Nellcor Oximax	FMT-DAF / NLO - Y	FMT-DPF / NLO - Y	FMT-DIF / NLO - Y	FMT-DNF / NLO - Y
Nihon Kohden	FMT-DAF / NKN - Y	FMT-DPF / NKN - Y	FMT-DIF / NKN - Y	FMT-DNF / NKN - Y
Nonin*	FMT-DAF / NON - Y	FMT-DPF / NON - Y	FMT-DIF / NON - Y	FMT-DNF / NON - Y
Novamatrix*	FMT-DAF / NVM - Y	FMT-DPF / NVM - Y	FMT-DIF / NVM - Y	FMT-DNF / NVM - Y

\* Manufactured upon order

Y: "Y" for wrap material. Please add "M" for microfoam, "F" for fabric material.

Example: FMT-DAF/NLC-F means fabric material, adult size, disposable SpO2 sensor for Nellcor.



**FMT-DVF Series single patient use SpO2 sensors**

*Due to the non-adhesive Velcro design, the repositioning of the sensor is possible for many times without deforming the sensor body.*

FMT Single Patient ▼ Use Sensor	▼ Patient Type	▼ Patient Weight	▼ Cable Length	▼ Preferred Application Area
FMT-DVF/XXX	Neonatal/Adult	<3 kg or >30 kg (<6.6 lbs or >66 lbs)	90 cm	Lateral aspect of foot or Index finger (for adult)



▼ Compatible Brand	▼ Neonatal / Adult
BCI*	FMT-DVF / BCI
Criticare(CSI)*	FMT-DVF / CSI
Datex*	FMT-DVF / DTX
GE OxyTip (UN Connector)*	FMT-DVF / OXY
GE TruSignal*	FMT-DVF / OXN
MEK*	FMT-DVF / MEK
Masimo (LNOP)*	FMT-DVF / MSD
Masimo (LNCS)*	FMT-DVF / MSM
Nellcor	FMT-DVF / NLC
Nellcor Oximax	FMT-DVF / NLO
Nihon Kohden	FMT-DVF / NKN
Nonin*	FMT-DVF / NON
Novametrix*	FMT-DVF / NVM

\* Manufactured upon order

▼ Sensor Side Connector

▼ Monitor Side Connector

**Acendis**



REF: AEC-5263



APM 3000  
DB9 female > Redel 8 pin, 0° keying, green cable collet, 2.4 m  
Nellcor Oximax SpO2 Set • Nellcor Oximax Sensor

**Adecon**



REF: AEC-5242



DK7000/8000/8000D/8000L/8000M/8000N/8000S.  
DB9 female > Redel 6 pin, 0° keying, blue cable collet, 2.4 m  
Nellcor SpO2 Set • Nellcor Sensor

**BCI**



REF: AEC-5105



3040/3100/3101/3300/3301/3302/3303/3304/3401, 9100/9200, Advisor, Autocorr, Fingerprint, Mini Torr/Plus.  
DB9 female > DB9 male, 2.4 m  
BCI SpO2 Set • BCI Sensor



REF: AEC-5133



6100,9100 Serena.  
DB9 female > Redel 7 pin, 0° keying, blue cable collet, 2.4 m  
BCI SpO2 Set • BCI Sensor

**Biocare**



REF: AEC-5248



IM8/10/12/15  
DB9 female > Round 10 pin blue connector, 2.4 m  
Nellcor SpO2 Set • Nellcor Prob

**Biolight**



REF: AEC-5199



M6/12.  
DB9 female > Redel 5 pin, 0° keying, blue cable collet, 2.4 m  
Nellcor SpO2 Set • Nellcor Sensor



REF: AEC-5172



M8000A/9000/9000A.  
DB9 female > Redel 5 pin, 0° keying yellow cable collet, 2.4 m  
Dijital SpO2 Set • Dijital Sensor



REF: AEC-5230



AnyView A2/2E/3/5/6/8, Q3/5/7, V6, M7000/8500.  
DB9 female > Round 9 pin, blue connector, 2.4 m  
Biolight SpO2 Set • Dijital Sensor



REF: AEC-5249



M9500.  
DB9 female > Round 12 pin blue connector, 2.4 m  
Biolight SpO2 Set • Dijital Sensor

**Bionet**



REF: AEC-5120



BM3, BM3Plus, BM3Wide.  
DB9 female > Redel 7 pin, 0° keying, green cable collet, 2.4 m  
Nellcor SpO2 Set • Nellcor Sensor



▼ Sensor Side Connector

▼ Monitor Side Connector

**Bionet**



• REF: AEC-5151

- BM1, BM3, BM5, BM7.

DB9 female > Round 7 pin green connector, 2.4 m  
 Nellcor SpO2 Set • Nellcor Sensor

**Biosys**



• REF: AEC-5104

- BPM 200/700, Guardian, Sentry-NS.

DB9 female > DB9 male white connector, 2.4 m  
 Nellcor SpO2 Set • Nellcor Sensor



• REF: AEC-5135

- BPM300.

DB9 female > Mini DIN 6 pin black connector, 2.4 m  
 Nellcor SpO2 Set • Nellcor Sensor

**Bruker - Odam**



• REF: AEC-5141

- All.

DB9 female > Round 12 pin light green connector, 2.4 m  
 BCI SpO2 Set • BCI Sensor

**Cardiac Science**



• REF: AEC-5186

- Diascope G2.

DB9 female > Redel 6 pin, 40° keying, blue cable collet, 2.4 m  
 Nellcor SpO2 Set • Nellcor Sensor



• REF: AEC-5149

- 5300/5350.

DB9 female > DOC10, 14 pole blue connector, 2.4 m  
 Nellcor Oximax SpO2 Set • Nellcor Oximax Sensor



• REF: AEC-5225

- 5300/5350.

DB9 female > 3M 14 pole, 2.4 m  
 Masimo SpO2 Set • Masimo LNCS Sensor



• REF: AEC-5173

- 5300/5350.

DB9 female > 3M 14 pole, 2.4 m  
 Masimo SpO2 Set • Nellcor Sensor  
 Masimo to Nellcor Converter



• REF: AEC-5215

- 5300/5350.

Masimo 6 pole connector > 3M 14 pole, 2.4 m  
 Masimo SpO2 Set • Masimo LNOP Sensor

▼ Sensor Side Connector

▼ Monitor Side Connector



• REF: AEC-5266



• VSign 200

**Cardioline**

DB9 female > Redel 6 pin, keying, green cable collet, 2.4 m  
 Nellcor SpO2 Set • Nellcor Sensor



• REF: AEC-5114



• MD300.

**Choice**

DB9 female > Redel 6 pin, 0° keying, yellow cable collet, 2.4 m  
 BCI SpO2 Set • BCI Sensor



• REF: AEC-5228



• C80.

**Comen**

DB9 female > Redel 8 pin, 40° keying, red cable collet, 2.4 m  
 Nellcor Oximax SpO2 Set • Nellcor Oximax Sensor



• REF: AEC-5228



• Star 8000 E/F/H/C ve NC Series.

DB9 female > Round 12 pin white connector, 2.4 m  
 Nellcor SpO2 Set • Nellcor Sensor



• REF: AEC-5274



• Star 8000 E/F/H/C ve NC Series.

DB9 female > Round 12 pin blue connector, 2.4 m  
 Digital SpO2 Set • Digital Sensor



• REF: AEC-5172



• CMS 5000/5000C/5100/6000/6800/7000/7000Plus/8000/9000, HMS 6500.

DB9 female > Redel 5 pin, 0° keying yellow cable collet, 2.4 m  
 Dijital SpO2 Set • Dijital Sensor



• REF: AEC-5197



• P Vise.

DB9 female > Redel 6 pin, 40° keying, green cable collet, 2.4 m  
 Nellcor SpO2 Set • Nellcor Sensor



• REF: AEC-5129



• 8/16.

**Corpuls**

DB9 female > Round 12 pin light green connector, 2.4 m  
 BCI SpO2 Set • BCI Sensor



• REF: AEC-5229



• 3

DB9 female > Round 11 pin red connector, 2.4 m  
 MASIMO SpO2 Set • MASIMO Sensor



• REF: AEC-5145



• 503 Spot/DX, 504 DX, 506 DX NP, Mini SpO2.

**Criticare (CSI)**

DB9 female > DB6 male, 2.4 m  
 CSI SpO2 Set • CSI Sensor



▼ Sensor Side Connector

▼ Monitor Side Connector



• REF: AEC-5146

## Criticare (CSI)

- 501/503/504/507/508/581/1100, Poet Plus 8100, Poni, Scholar.  
DB9 female > Lemo metal, 5 pin, black cable collet, 2.4 m  
CSI SpO2 Set • CSI Sensor



• REF: AEC-5268

## CU Medical

- CU-HD1 Lifegain  
DB9 female > Redel 8 pin 0° keying blue cable collet, 2.4 m  
Nellcor Oximax SpO2 Set • Nellcor Oximax Sensor



• REF: AEC-5225

## Datascope

- Expert, Passport/2/2LT/V/XG, Accutorr V/Plus, Spectrum/OR, Trio, Duo, V12/21.  
DB9 female > 3M 14 pole, 2.4 m  
Masimo SpO2 Set • Masimo LNCS Sensor



• REF: AEC-5173

- Expert, Passport/2/2LT/V/XG, Accutorr V/Plus, Spectrum/OR, Trio, Duo, V12/21.  
DB9 female > 3M 14 pole, 2.4 m  
Masimo SpO2 Set • Nellcor Sensor  
Masimo to Nellcor Converter



• REF: AEC-5215

- Expert, Passport/2/2LT/V/XG, Accutorr V/Plus, Spectrum/OR, Trio, Duo, V12/21.  
Masimo 6 pole connector > 3M 14 pole, 2.4 m  
Masimo SpO2 Set • Masimo LNOP Sensor



• REF: AEC-5133

## Digicare

- Digioxi 920, P0930, Oxitrace, Digimax.  
DB9 female > Redel 7 pin, 0° keying, blue cable collet, 2.4 m  
BCI SpO2 Set • BCI Sensor



• REF: AEC-5144

- Digioxi 920, P0930, Oxitrace, Digimax.  
DB9 female > DIN 8 pin, U type, 2.4 m  
BCI SpO2 Set • BCI Sensor



• REF: AEC-5152

- Life Window 6000.  
DB9 female > Hypertac 7 pin, black connector, 2.4 m  
BCI SpO2 Set • BCI Sensor



• REF: AEC-5153

## Dolphin

- 2100/2150.  
DB9 female > 3M 14 pole, 2.4 m  
Dolphin SpO2 Set • Dolphin Sensor

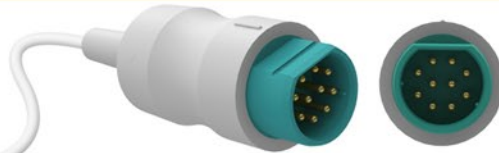
▼ Sensor Side Connector

▼ Monitor Side Connector

**Dräger/Siemens**



• REF: AEC-5131



• Micro 2, Sirecult 404-1/700/630, Sirem module.  
DB9 female > Round 10 pin light green connector, 2.4 m  
Nellcor SpO2 Set • Nellcor Sensor



• REF: AEC-5138



• Infinity Vista / Gamma / Kappa, Siemens, SC 5000/6000/6002/7000/8000/9000 (XL).  
DB9 female > SM 7 pin blue connector, 2.4 m  
Nellcor SpO2 Set • Nellcor Sensor



• REF: AEC-5168



• Infinity Vista / Gamma / Kappa, Siemens, SC 5000/6000/6002/7000/8000/9000 (XL).  
DB9 female > SM 7 pin blue connector, 1.2 m  
Nellcor SpO2 Set • Nellcor Sensor



• REF: AEC-5218



• Infinity Vista / Gamma / Kappa, Siemens, SC 5000/6000/6002/7000/8000/9000 (XL).  
DB9 female > SM 7 pin light blue connector, 2.4 m  
Nellcor Oximax SpO2 Set • Nellcor Oximax Sensor



• REF: AEC-5219



• Infinity Vista / Gamma / Kappa, Siemens, SC 5000/6000/6002/7000/8000/9000 (XL).  
DB9 female > SM 7 pin light blue connector, 1.2 m  
Nellcor Oximax SpO2 Set • Nellcor Oximax Sensor



• REF: AEC-5232



• Infinity Vista / Gamma / Kappa, Siemens, SC 5000/6000/6002/7000/8000/9000 (XL).  
DB9 female > SM 7 pin light blue connector, 2.4 m  
Nellcor Oximax SpO2 Set • Nellcor Sensor  
Nellcor to Nellcor Oximax Converter



• REF: AEC-5233



• Infinity Vista / Gamma / Kappa, Siemens, SC 5000/6000/6002/7000/8000/9000 (XL).  
DB9 female > SM 7 pin light blue connector, 1.2 m  
Nellcor Oximax SpO2 Set • Nellcor Sensor  
Nellcor to Nellcor Oximax Converter



• REF: AEC-5252



• Infinity Vista / Gamma / Kappa, Siemens, SC 5000/6000/6002/7000/8000/9000 (XL).  
Masimo 6 pole connector > SM 7 pin light blue connector, 1.2 m  
Masimo SpO2 Set • Masimo LNOP Sensor



• REF: AEC-5269



• Infinity Vista / Gamma / Kappa, Siemens, SC 5000/6000/6002/7000/8000/9000 (XL).  
DB9 female > SM 7 pin light blue connector, 2.4 m  
Masimo SpO2 Set • Masimo LNCS Sensor



▼ Sensor Side Connector

▼ Monitor Side Connector

**Dräger/Siemens**



• REF: AEC-5154

• Cato, Cicero EM, Evita 4, Julian, PB8800, VM1/3, RM1, Vamos PM 8010/8014/8040/8050/8060, Vitaro, Vitalert 1000.  
DB9 female > Lemo plastik 8 pin white connector, 2.4 m  
Nellcor SpO2 Set • Nellcor Sensor

**Edan**



• REF: AEC-5106

• iM 50/60/70/80, iM9/9A/8/8A/8B.  
DB9 female > Redel 6 pin, 40° keying blue cable collet, 2.4 m  
Nellcor SpO2 Set • Nellcor Sensor



• REF: AEC-5241

• M9B, M8B.  
DB9 female > Redel 5 pin, 0° keying yellow cable collet, 2.4 m  
Digital SpO2 Set • Digital Sensor



• REF: AEC-5184

• M9B, M8B.  
DB9 female > Redel 8 pin, 0° keying, blue cable collet, 2.4 m  
Nellcor Oximax SpO2 Set • Nellcor Oximax Sensor



• REF: AEC-5160

• Elite V5/V6/V8, iM20.  
DB9 female > Round 7 pin blue connector, 2.4 m  
Nellcor SpO2 Set • Nellcor Sensor

**Emtel**



• REF: AEC-5247

• FX 2000P/3000/3000MD.  
DB9 female > Round 12pin, blue connector, 2.4 m  
Nellcor Oximax SpO2 Set • Nellcor Oximax Sensor

**GE Datex Ohmeda**



• REF: AEC-5111

• S/5, AS/3, CS/3, CH S/2S/RS, CG 2S/2CS, Cardio Cap 1/2/5, Capnomac Ultima, Light, M series modules, Oscar 2, OSP200, Satlite Trans/Plus II, Ult SVI/SVO/SIO/SOO.  
DB9 female > DPK1 Round 10 socket grey connector, 2.4 m (OXY-C1)  
Datex SpO2 Set • Datex Sensor



• REF: AEC-5187

• S/5, AS/3, CS/3, CH S/2S/RS, CG 2S/2CS, Cardio Cap 1/2/5, Capnomac Ultima, Light, M series modules, Oscar 2, OSP200, Satlite Trans/Plus II, Ult SVI/SVO/SIO/SOO.  
OXY TIP Round > DPK1 Round 10 socket grey connector, 2.4 m (OXY-SL3)  
Datex SpO2 Set • OxyTip Sensor



• REF: AEC-5204

• S/5, AS/3, CS/3, CH S/2S/RS, CG 2S/2CS, Cardio Cap 1/2/5, Capnomac Ultima, Light, M series modules, Oscar 2, OSP200, Satlite Trans/Plus II, Ult SVI/SVO/SIO/SOO.  
TruSignal DB9 female > DPK1 Round 10 socket grey connector, 2.4 m (TS-N3)  
Datex SpO2 Set • TruSignal Sensor

# Pulse Oximetry Sensors

Adapters & Extension Cables

▼ Sensor Side Connector

▼ Monitor Side Connector

**GE Datex Ohmeda**

- 

• REF: AEC-5189

• Ohmeda Trusat, Trusat TD.  
OXY TIP Round > Tru Sat 9 pin grey connector, 2.4 m (OXY-MC3)  
TruSat SpO2 Set • **OxyTip Sensor**
- 

• REF: AEC-5201

• Ohmeda Trusat, Trusat TD.  
TruSignal DB9 female > Tru Sat 9 pin grey connector, 2.4 m (TS-M3)  
TruSat SpO2 Set • **TruSat Sensor**
- 

• REF: AEC-5190

• Ohmeda 3700/3710/3770/3775/3800/3900, OxiCap 5250 RGM, Biox 3740/3760/3800/4700, Rascal 2, OxiTip Plus, TuffSat.  
OXY TIP Round > Hypertac 7 pin black connector, 2.4 m (OXY-OL3)  
Ohmeda SpO2 Set • **OxyTip Sensor**
- 

• REF: AEC-5205

• Ohmeda 3700/3710/3770/3775/3800/3900, OxiCap 5250 RGM, Biox 3740/3760/3800/4700, Rascal 2, OxiTip Plus, TuffSat.  
TruSignal DB9 female > Hypertac 7 pin black connector, 2.4 m (TS-H3)  
Ohmeda SpO2 Set • **TruSignal Sensor**
- 

• REF: AEC-5188

• E series module i4 modular S5 monitors, Corometrics 259, Dinamap V100, Carescape B650/V100, B20/30/40.  
OXY TIP Round > Rectangle 11 pin blue connector, 2.4m (OXY-E53)  
Marquette SpO2 Set • **OxyTip Sensor**
- 

• REF: AEC-5202

• E series module i4 modular S5 monitors, Corometrics 259, Dinamap V100, Carescape B650/V100, B20/30/40.  
TruSignal DB9 female > Rectangle 11 pin blue connector, 2.4m (TS-G3)  
Marquette SpO2 Set • **TruSignal Sensor**

**GE Dinamap**

- 

• REF: AEC-5225

• Dinamap Pro 300/400/1000, Procure series.  
DB9 female > 3M 14 pole, 2.4 m  
Masimo SpO2 Set • **Masimo LNCS Sensor**
- 

• REF: AEC-5173

• Expert, Passport/2/2LT/V/XG, Accutorr V/Plus, Spectrum/OR, Trio, Duo, V12/21.  
DB9 female > 3M 14 pole, 2.4 m  
Masimo SpO2 Set • **Nellcor Sensor**  
Masimo to Nellcor Converter
- 

• REF: AEC-5215

• Expert, Passport/2/2LT/V/XG, Accutorr V/Plus, Spectrum/OR, Trio, Duo, V12/21.  
Masimo 6 pole connector > 3M 14 pole, 2.4 m  
Masimo SpO2 Set • **Masimo LNOP Sensor**



▼ Sensor Side Connector

▼ Monitor Side Connector



• REF: AEC-5149



• REF: AEC-5140



• REF: AEC-5159



• REF: AEC-5161



• REF: AEC-5163



• REF: AEC-5162



• REF: AEC-5217



• REF: AEC-5213



• REF: AEC-5222



**GE Dinamap**  
 • Procure, Pro series V2, ProMap, Pro300/1000/1000V3.  
 DB9 female > DOC10, 14 pole blue connector, 2.4 m  
 Nellcor Oximax SpO2 Set • **Nellcor Oximax Sensor**



• Compact, MPS.  
 DB9 female > DB9 male blue connector, 2.4 m  
 Nellcor Oximax SpO2 Set • **Nellcor Oximax Sensor**



**GE Hellige**  
 • Hellige SMU, SMK, Eagle 1000/2000/3000, CardioServ.  
 DB9 female > Hellige Round 10 pin light yellow connector, 2.4 m  
 Nellcor SpO2 Set • **Nellcor Sensor**



**GE Marquette**  
 • Eagle 1000/3000/4000, Dash 2000/3000/5000, Solar 8000, Tram module 450SL/451/851, Corometrics 120/2120, MacLab, Responder 3000.  
 DB9 female > Rectangle 11 pin blue connector, 2.4 m  
 Nellcor SpO2 Set • **Nellcor Sensor**



• Dash 2500/4000/5000, Solar 8000i, Tram module 451N/851N, Corometrics 250 series.  
 DB9 female > Rectangle 11 pin blue connector, 2.4 m  
 Nellcor Oximax SpO2 Set • **Nellcor Oximax Sensor**



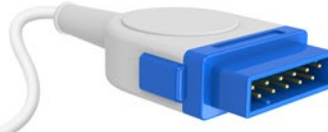
• Dinamap, Procure, Pro Series V2, Pro 1000V3, Solar 8000M, Dash 2500/3000/4000/5000, Tram module 451M/851M.  
 Masimo 6 pole connector > Rectangle 11 pin blue connector, 2.4m  
 Masimo SpO2 Set • **Masimo LNOP Sensor**



• Dinamap, Procure, Pro series V2, Pro 1000V3, Solar 8000M, Dash 2500/3000/4000/5000, Tram module 451M/851M.  
 DB9 female > Rectangle 11 pin blue connector, 2.4m  
 Masimo SpO2 Set • **Masimo LNCS Sensor**



• Dash 2500/4000/5000, Solar 8000i, Tram module 451N/851N, Corometrics 250 series.  
 DB9 female > Rectangle 11 pin blue connector, 2.4 m  
 Nellcor Oximax SpO2 Set • **Nellcor Sensor**  
 Nellcor to Nellcor Oximax Converter



• Dinamap, Procure, Pro seri V2, Pro 1000V3, Solar 8000M, Dash 2500/3000/4000/5000, Tram modul 451M/851M.  
 DB9 female > Rectangle 11 pin blue connector, 2.4m  
 Masimo SpO2 Set • **Nellcor Sensor**  
 Nellcor to Masimo Converter

▼ Sensor Side Connector

▼ Monitor Side Connector

**Generra / Pace Tech**



• REF: AEC-5108



• Vitalmax 200, 300, 400, 530, 710, 800 Series.  
DB9 female > Switchcraft 5 pole 2.4 m  
Nellcor SpO2 Set • Nellcor Sensor



• REF: AEC-5119



• Vital Max 4000 series, 710B.  
DB9 female > Redel 7 pin 0° keying blue cable collet, 2.4 m  
Nellcor SpO2 Set • Nellcor Sensor



• REF: AEC-5132



• UT4000A/F/A Pro/F Pro.  
DB9 female > Redel 5 pin 0° keying blue cable collet, 2.4 m  
BCI SpO2 Set • BCI Sensor



• REF: AEC-5134



• UT4000A/F/A Pro/F Pro.  
DB9 female > Lemo metal 5 pin black cable collet, 2.4 m  
BCI SpO2 Set • BCI Sensor



• REF: AEC-5121



• UT4000A/F/A Pro/F Pro.  
DB9 female > Redel 7 pin, 0° keying, blue cable collet, 2.4 m  
Nellcor Oximax SpO2 Set • Nellcor Oximax Sensor



• REF: AEC-5143



**Guoteng**  
• GT9000E/B/F/M, GT9003B/F/M, Q5.  
DB9 female > Redel 6 pin, 0° keying, blue cable collet, 2.4 m  
Nellcor SpO2 Set • Nellcor Sensor



• REF: AEC-5153



**Huntleigh**  
• Smartsigns Compact 1000.  
DB9 female > 3M 14 pole, 2.4 m  
Dolphin SpO2 Set • Dolphin Sensor



• REF: AEC-5203



**Infinium**  
• Omni, Omni II, Omni III, Omni (K), Omni Express, Omni Express VS.  
DB9 female > Redel 5 pin, 40° keying green cable collet, 2.4 m  
Solaris SpO2 Set • Solaris Sensor



▼ Sensor Side Connector

▼ Monitor Side Connector



**Innomed**

• REF: AEC-5101

- Innocare-S, Innocare-T12.

DB9 female > Redel 7 pin, 40° keying black cable collet, 2.4 m  
BCI SpO2 Set • Nellcor Sensor



**Invivo - MDE**

• REF: AEC-5170

- 4500 Plus, 4500 Plus /1/2/3/, Millennia, Omega14 45, Omni-Trak, TVS, Sat Scout, Scout ES.

DB9 female > Lemo metal 7 pin, black cable collet, 2.4 m  
Nellcor SpO2 Set • Nellcor Sensor



- MDE Escort M8, M12.

DB9 female > Lemo metal 7 pin black cable collet, 2.4 m  
Masimo SpO2 Set • Masimo LNCS Sensor



- MDE Escort M8, M12.

DB9 female > Lemo metal 7 pin, black cable collet, 2.4 m  
Masimo SpO2 Set • Nellcor Sensor  
Nellcor to Masimo Converter

• REF: AEC-5171



**Ivy Medical**

• REF: AEC-5225

- VitalGuard 450C.

DB9 female > 3M 14 pole, 2.4 m  
Masimo SpO2 Set • Masimo LNCS Sensor



- VitalGuard 450C.

DB9 female > 3M 14 pole, 2.4 m  
Masimo SpO2 Set • Nellcor Sensor  
Masimo to Nellcor Converter

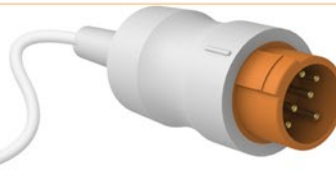
• REF: AEC-5173



- VitalGuard 450C.

Masimo 6 pole connector > 3M 14 pole, 2.4 m  
Masimo SpO2 Set • Masimo LNCS Sensor

• REF: AEC-5215



**Kontron**

• REF: AEC-5109

- 7840/7845/7137, Micromon, Minimon, Supermon, Kolomon, Trakmon.

DB9 female > Round 6 pin orange connector, 2.4 m  
BCI SpO2 Set • BCI Sensor

## ▼ Sensor Side Connector

## ▼ Monitor Side Connector



• REF: AEC-5139



• REF: AEC-5158



• REF: AEC-5175



• REF: AEC-5198



• REF: AEC-5181



• REF: AEC-5194



• REF: AEC-5147



• REF: AEC-5157



**Kontron**

- 7840/7845/7137, Micromon, Minimon, Supermon, Kolormon, Trakmon.

DB9 dişi > Redel 7 pim, 80° kanallı gri kablo koruyuculu, 2.4 m

Nellcor SpO2 Set • Nellcor Prob



- 7840/7845/7137, Micromon, Minimon, Supermon, Kolormon, Trakmon.

DB9 dişi > Redel 8 pim 40° kanallı yeşil kablo koruyuculu, 2.4 m

Nellcor Oximax SpO2 Set • Nellcor Oximax Prob



**Ktmed**

- KTPM 1010/1020/1030/1040/1050/1060/2002, Angelus.

DB9 dişi > Redel 7 pim, 0° tek kanallı, mavi kablo koruyuculu, 2.4 m

Nellcor SpO2 Set • Nellcor Prob



**Larsen & Toubro**

- Galaxy serisi.

DB9 dişi > Yuvarlak 12 pim sarı konektör, 2.4 m

Nellcor SpO2 Set • Nellcor Prob



- Galaxy serisi.

DB9 dişi > Yuvarlak 12 pim sarı konektör, 2.4 m

Nellcor Oximax SpO2 Set • Nellcor Oximax Prob



**Medlab**

- P-OX100, P-OX100L.

DB9 dişi > Redel 7 pim, 80° kanallı mavi kablo koruyuculu, 2.4 m

BCI SpO2 Set • BCI Prob



**MEK**

- MP 100/110/111/200S/400/500/600/1000.

DB9 dişi > DB6 erkek sarı konektör, 2.4 m

MEK SpO2 Set • MEK Prob



- MP 570/700/800/2500.

DB9 dişi > Mini DIN 7 pim turuncu konektör, 2.4 m

MEK SpO2 Set • MEK Prob



▼ Sensor Side Connector

▼ Monitor Side Connector

**MEK** 



• REF: AEC-5177



• MP1200.

DB9 female > Round 8 pin yellow connector, 2.4 m  
MEK SpO2 Set • MEK Sensor



• REF: AEC-5178



• MP1200.

DB9 female > Round 8 pin yellow connector, 2.4 m  
Nellcor SpO2 Set • Nellcor Sensor



• REF: AEC-5180



• Horizon XL/2000, Mercury 1200, MR1300, Envoy.

DB9 female > Lemo metal 10 pin black cable  
collet, 2.4 m  
Nellcor SpO2 Set • Nellcor Sensor



• REF: AEC-5179

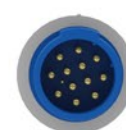


• Envoy.

DB9 female > Round 8 pin blue connector, 2.4 m  
Nellcor SpO2 Set • Nellcor Sensor



• REF: AEC-5192

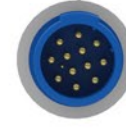


• Envoy, Vitalogik 4000/4500.

DB9 female > Round 13 pin blue connector, 2.4 m  
Masimo SpO2 Set • Nellcor Sensor  
Nellcor to Masimo Converter



• REF: AEC-5207



• Envoy, Vitalogik 4000/4500/5000/5500/6000, Menntor X7.

DB9 female > Round 13 pin blue connector, 2.4 m  
Masimo SpO2 Set • Masimo LNCS Sensor



• REF: AEC-5155



• Envoy, Vitalogik 4000/4500/5000/5500/6000, Menntor X7.

DB9 female > Round 13 pin blue connector, 2.4 m  
Nellcor Oximax SpO2 Set • Nellcor Oximax Sensor



• REF: AEC-5214



• Envoy, Vitalogik 4000/4500/5000/5500/6000, Menntor X7.

DB9 female > Round 13 pin blue connector, 2.4 m  
Nellcor Oximax SpO2 Set • Nellcor Sensor  
Nellcor to Nellcor Oximax Converter

**Mennen** 

▼ Sensor Side Connector

▼ Monitor Side Connector

**Metrax - Primedic**



• REF: AEC-5107



• DM1/3/10/30, ED-210/220/230/240.  
DB9 female > Redel 7 pin, 0° keying blue cable collet, 2.4 m  
Nellcor SpO2 Set • Nellcor Sensor



• REF: AEC-5118



• DM1/3/10/30, ED-210/220/230/240.  
DB9 female > Redel 8 pin, 40° keying green cable collet, 2.4 m  
Nellcor Oximax SpO2 Set • Nellcor Oximax Sensor



• REF: AEC-5156



• XD300/330/3 xe, Heart Save 6S.  
DB9 female > Mini Snap 8 pin blue cable collet, 2.4 m  
Nellcor Oximax SpO2 Set • Nellcor Oximax Sensor

**Mindray**



• REF: AEC-5116



• PM 9000, MEC509B.  
DB9 female > Lemo metal 5 pin black cable collet, 2.4 m  
Nellcor SpO2 Set • Nellcor Sensor



• REF: AEC-5106



• PM 6000, PM 7000, PM 8000, PM 9000, MEC1000/1200 2000, VS 800.  
DB9 female > Redel 6 pin, 40° keying blue cable collet, 2.4 m  
Nellcor SpO2 Set • Nellcor Sensor



• REF: AEC-5206



• PM 6000, PM 7000, PM 8000, PM 9000, MEC1000/1200 2000, VS 800.  
DB9 female > Redel 6 pin, 80° keying, blue cable collet, 2.4 m,  
Nellcor Oximax SpO2 Set • Nellcor Oximax Sensor



• REF: AEC-5209



• PM 6000, PM 7000, PM 8000, PM 9000, MEC1000/1200 2000, VS 800.  
DB9 female > Redel 6 pin, 60° keying blue cable collet, 2.4 m  
Masimo SpO2 Set • Masimo LNCS Sensor



• REF: AEC-5239



• PM 6000, PM 7000, PM 8000, PM 9000, MEC1000/1200 2000, VS 800.  
Masimo 6 pole connector > Redel 6 pin, 60° keying blue cable collet, 2.4 m  
Masimo SpO2 Set • Masimo LNOP Sensor



• REF: AEC-5115



• PM 6000, PM 7000, PM 8000, PM 9000, MEC1000/1200 2000, VS 800.  
DB9 female > Redel 6 pin, 60° keying blue cable collet, 2.4 m  
Masimo SpO2 Set • Nellcor Sensor  
Nellcor to Masimo Converter



▼ Sensor Side Connector

▼ Monitor Side Connector

**Mindray**



• REF: AEC-5136



• PM-5000 / 6000 / 8000.  
DB9 female > Round 12 pin blue connector, 2.4 m  
Nellcor SpO2 Set • Nellcor Sensor



• REF: AEC-5210



• PM-5000 / 6000 / 8000.  
DB9 female > Round 12 pin blue connector, 2.4 m  
Masimo SpO2 Set • Masimo LNCS Sensor



• REF: AEC-5137



• PM-5000 / 6000 / 8000.  
DB9 female > Round 12 pin blue connector, 2.4 m  
Masimo SpO2 Set • Nellcor Sensor  
Nellcor to Masimo Converter



• REF: AEC-5160



• BeneView T1/T5/T6/T8/T9, BeneHeart D6, iPM 9800/12/10/8  
iMEC 12/10/8, VS600, VS900.  
DB9 female > Round 7 pin blue connector, 2.4 m  
Nellcor SpO2 Set • Nellcor Sensor



• REF: AEC-5167



• BeneView T1/T5/T6/T8/T9, BeneHeart D6, iPM 9800/12/10/8  
iMEC 12/10/8, VS600, VS900.  
DB9 female > Round 8 pin grey connector, 2.4 m  
Nellcor Oximax SpO2 Set • Nellcor Oximax Sensor



• REF: AEC-5236



• BeneView T1/T5/T6/T8/T9, BeneHeart D6, iPM 9800/12/10/8  
iMEC 12/10/8, VS600, VS900.  
DB9 female > Round 8 pin grey connector, 2.4 m  
Nellcor Oximax SpO2 Set • Nellcor Sensor  
Nellcor to Nellcor Oximax Converter



• REF: AEC-5169

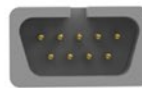


• BeneView T1/T5/T6/T8/T9, BeneHeart D6, iPM 9800/12/10/8  
iMEC 12/10/8, VS600, VS900.  
DB9 female > Round 7 pin white connector, 2.4 m  
Masimo SpO2 Set • Masimo LNCS Sensor

**Nellcor**



• REF: AEC-5104



• All except those listed for Nellcor.  
DB9 female > DB9 male white connector, 2.4 m  
Nellcor SpO2 Set • Nellcor Sensor



• REF: AEC-5110



• All except those listed for Nellcor.  
DB9 female > DB9 male white connector, 1.2 m  
Nellcor SpO2 Set • Nellcor Sensor

▼ Sensor Side Connector

▼ Monitor Side Connector

**Nellcor**



REF: AEC-5148



NPB 290/295/395, N 180/390/3000/6000.

DB9 female > 3M 14 pole grey connector, 2.4 m  
Nellcor SpO2 Set • Nellcor Sensor



REF: AEC-5149



N 550/560/595/600x.

DB9 female > DOC10, 14 pole blue connector, 2.4 m  
Nellcor Oximax SpO2 Set • Nellcor Oximax Sensor



REF: AEC-5123



N 550/560/595/600x.

DB9 female > DOC10, 14 pole blue connector, 2.4 m  
Nellcor Oximax SpO2 Set • Nellcor Sensor  
Nellcor to Nellcor Oximax Converter



REF: AEC-5140



NBP 190/3940/4000.

DB9 female > DB9 male, blue connector, 2.4 m  
Nellcor Oximax SpO2 Set • Nellcor Oximax Sensor



REF: AEC-5130



NBP 190/3940/4000.

DB9 female > DB9 male, blue connector, 1.2 m  
Nellcor Oximax SpO2 Set • Nellcor Oximax Sensor



REF: AEC-5182



NBP 190/3940/4000.

DB9 female > DB9 male, blue connector, 2.4 m  
Nellcor Oximax SpO2 Set • Nellcor Sensor  
Nellcor to Nellcor Oximax Converter



REF: AEC-5183



NBP 190/3940/4000.

DB9 female > DB9 male, blue connector, 0.2 m  
Nellcor Oximax SpO2 Set • Nellcor Sensor  
Nellcor to Nellcor Oximax Converter



REF: AEC-5124



**Newtech Solaris**

PM 9000A/9300.

DB9 female > Redel 6 pin, 40° keying, green cable collet, 2.4 m  
Solaris SpO2 Set • Solaris Sensor



REF: AEC-5122



**Nihon Kohden**

Life Scope series BSM-2300/2301A/2351/2353/2301/ 2303 BSM-4100/4101/4103/4111/4113/5100/5105/5135/6000 BSM-6301K/6501K/6701K/9510/9800.

DB9 NK female > NK 15 pin, blue connector, 2.4 m  
Nihon Kohden SpO2 Set • Nihon Kohden Sensor



▼ Sensor Side Connector

▼ Monitor Side Connector

**Nihon Kohden**



• REF: AEC-5200



• REF: AEC-5235



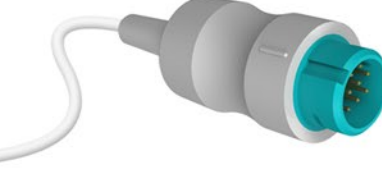
• REF: AEC-5112



• REF: AEC-5258



• REF: AEC-5259



• Life Scope TR, BSM-6000 series, BSM-6310K, BSM-6501K, BSM-6701K, AY-651P, AY-653P module.  
DB9 NK female > NK 14 pin violet connector, 2.4 m  
Nellcor Oximax SpO2 Set • [Nellcor Oximax Sensor](#)



• AL-800PA module, Life Scope series BSM-1101/2101/ BSM-3101/7100/7200/8200/8201/8301/8800/8800A OLV-1100A.  
DB9 NK female > Round 10 pin, light green connector, 2.4 m  
Nihon Kohden SpO2 Set • [Nihon Kohden Sensor](#)



• OPV-1500 Life Scope N / K, Oxypal OLV2700, Oxypal Neo OLV-3100).  
DB9 female > 3M 20 pin blue connector, 2.4 m  
Nihon Kohden SpO2 Set • [Nihon Kohden Sensor](#)



• Life Scope TR, BSM-6000 series, BSM-6310K, BSM-6501K, BSM-6701K, AY-651P, AY-653P module  
DB9 female > NK 14 pin violet connector, 2.4 m  
Masimo SpO2 Set • [Masimo LNCS Sensor](#)



• Life Scope TR, BSM-6000 series, BSM-6310K, BSM-6501K, BSM-6701K, AY-651P, AY-653P module.  
Masimo 6 pole > NK 14 pin violet connector, 2.4 m  
Masimo SpO2 Set • [Masimo LNOP Sensor](#)

**Nonin**



• REF: AEC-5191



• REF: AEC-5195



• Avant 2120, 9600, 9700, 8500 series, 9480 series.  
DB9 female > DB9 male black connector, 2.4 m  
Nonin SpO2 Set • [Nonin Sensor](#)



• Avant 2120, 9600, 9700, 8500 series, 9480 series.  
DB9 female > DB9 male black connector, 1.2 m  
Nonin SpO2 Set • [Nonin Sensor](#)

**Novamatrix**



• REF: AEC-5142



• 505, 510, 511, 515, 515A, 515B, 515C, 520, 520A, 2001, 7000, 7100, Oxypleth.  
DB9 female > Hypertac 7 pin black connector, 2.4 m  
Novamatrix SpO2 Set • [Novamatrix Sensor](#)

**Petaş**



• REF: AEC-5103



• KMA 800/375/275/175, PM 100/150.  
DB9 female > Redel 6 pin, 40° keying yellow cable collet, 2.4 m  
Nellcor SpO2 Set • [Nellcor Sensor](#)

▼ Sensor Side Connector

▼ Monitor Side Connector

Petaş



REF: AEC-5100

● KMA 160/165/260/265/360/365.  
DB9 female > DB9 male kit type with screws, grey connector, 2.4 m  
Nellcor SpO2 Set • Nellcor Sensor



REF: AEC-5246

● M3, M4, MP20, MP30, MP40, MP50, MP70, MP80, VM4, VM6, VM8.  
DB9 female > D type 8 pin male blue connector, 2.4 m  
Nellcor SpO2 Set • Nellcor Sensor  
Nellcor to Nellcor Oximax Converter



REF: AEC-5125

● 78352C, 78354C, 78834C, M1020A, M1025B, M1205A, M1350, M1722A/B, M1732A/B, M2475B, Viridia A1, Viridia A3.  
DB9 female > Round 12 pin blue connector, 2.4 m  
Nellcor SpO2 Set • Nellcor Sensor



REF: AEC-5126

● M3, M4, MP20, MP30, MP40, MP50, MP70, MP80, VM4, VM6, VM8.  
DB9 female > D type 8 pin male blue connector, 2.4 m  
Nellcor SpO2 Set • Nellcor Sensor



REF: AEC-5237

● M3, M4, MP20, MP30, MP40, MP50, MP70, MP80, VM4, VM6, VM8.  
DB9 female > D type 8 pin male blue connector, 1.2 m  
Nellcor SpO2 Set • Nellcor Sensor



REF: AEC-5223

● M3, M4, MP20, MP30, MP40, MP50, MP70, MP80, VM4, VM6, VM8.  
DB9 female > D type 8 pin male blue connector, 2.4 m  
Nellcor Oximax SpO2 Set • Nellcor Oximax Sensor



REF: AEC-5127

● M1020A, M2475B, M1732A/B, M1722A/B, 78833C, 78833A, 78834A, 78352C, 78352A.  
D type 8 pin, female > Round 12 pin blue connector, 2.4 m  
Philips SpO2 Set • Philips Sensor



REF: AEC-5128

● M1020B, M3000A/M3001A MMS, M3002A MMS X2, M8102A MP2, M8105A MP5.  
D type, 8 pin female > D type 8 pin male blue connector, 2.4 m  
Philips SpO2 Set • Philips Sensor



REF: AEC-5220

● M1020B, M3000A/M3001A MMS, M3002A MMS X2, M8102A MP2, M8105A MP5.  
DB9 female > D type 8 type male light blue connector, 2.4 m  
Masimo SpO2 Set • Masimo LNCS Sensor



▼ Sensor Side Connector

▼ Monitor Side Connector

**Philips HP**



• REF: AEC-5221

• M1020B, M3000A/M3001A MMS, M3002A MMS X2, M8102A MP2, M8105A MP5.  
Masimo 6 pole connector > D type 8 pin male light blue connector, 2.4 m  
Masimo SpO2 Set • Masimo LNOP Sensor

**Physio Control Medtronic**



• REF: AEC-5104

• Lifepak 12.  
DB9 female > DB9 male white connector, 2.4 m  
Nellcor SpO2 Set • Nellcor Sensor



• REF: AEC-5225

• Lifepak 12/20/20e.  
DB9 female > 3M 14 pole, 2.4 m  
Masimo SpO2 Set • Masimo LNCS Sensor



• REF: AEC-5173

• Lifepak 12/20/20e.  
DB9 female > 3M 14 pole, 2.4 m  
Masimo SpO2 Set • Nellcor Sensor  
Masimo to Nellcor Converter



• REF: AEC-5215

• Lifepak 12/20/20e.  
DB9 female > 3M 14 pole, 2.4 m  
Masimo SpO2 Set • Masimo LNOP Sensor

**Plusmed**



• REF: AEC-5172

• CMS 8000, CMS 9000.  
DB9 female > Redel 5 pin 0° kanalli, yellow cable collet, 2.4 m  
Solaris SpO2 Set • Solaris Sensor

**RGB**



• REF: AEC-5102

• Omicrom FT Surveyor, Omicrom Vision, Oxydina.  
DB9 female > Redel 7 pin, 0° keying, black cable collet, 2.4 m  
BCI SpO2 Set • BCI Sensor

**Saadat**



• REF: AEC-5185

• All models except non-masimo set.  
DB9 female > Round 6 pole, black connector, 2.4 m  
Nellcor SpO2 Set • Nellcor Sensor



• REF: AEC-5225

• Aria, Alborz B5/B9, Novin S630/S740/S1600/S1800.  
DB9 female > 3M 14 pole, 2.4 m  
Masimo SpO2 Set • Masimo LNCS Sensor

▼ Sensor Side Connector

▼ Monitor Side Connector

**Saadat**



• REF: AEC-5173



• Aria, Alborz B5/B9, Novin S630/S740/S1600/S1800.  
DB9 female > 3M 14 pole, 2.4 m  
Masimo SpO2 Set • Nellcor Sensor  
Masimo to Nellcor Çevirici



• REF: AEC-5215



• Aria, Alborz B5/B9, Novin S630/S740/S1600/S1800.  
DB9 female > 3M 14 pole, 2.4 m  
Masimo SpO2 Set • Masimo LNOP Sensor

**Schiller**



• REF: AEC-5225



• Oximeter OX-1, Argus Pro.  
DB9 female > 3M 14 pole, 2.4 m  
Masimo SpO2 Set • Masimo LNCS Sensor



• REF: AEC-5173



• Oximeter OX-1, Argus Pro.  
DB9 female > 3M 14 pole, 2.4 m  
Masimo SpO2 Set • Nellcor Sensor  
Masimo to Nellcor Çevirici



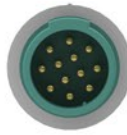
• REF: AEC-5215



• Oximeter OX-1, Argus Pro.  
Masimo 6 pole connector > 3M 14 pole, 2.4 m  
Masimo SpO2 Set • Masimo LNOP Sensor



• REF: AEC-5141



• Argus LCM, Physiogard TM910.  
DB9 female > Round 12 pin mint green connector, 2.4 m  
BCI SpO2 Set • BCI Sensor



• REF: AEC-5164



• Argus TM7, CM8.  
DB9 female > DIN 6 pin, black connector, 2.4 m  
BCI SpO2 Set • BCI Sensor



• REF: AEC-5216



• Argus TM7, CM8.  
DB9 female > DIN 7 pin, black connector, 2.4 m  
Masimo SpO2 Set • Masimo LNCS Sensor



• REF: AEC-5196



• Argus TM7, CM8.  
Masimo 6 pole connector > DIN 7 pin black connector, 2.4 m  
Masimo SpO2 Set • Masimo LNOP Sensor



▼ Sensor Side Connector

▼ Monitor Side Connector

Schiller



• REF: AEC-5165



• REF: AEC-5166



• Argus TM7, CM8.

DB9 female > DIN 7 pin, black connector, 2.4 m  
 Masimo SpO2 Set • Nellcor Sensor  
 Nellcor to Masimo Converter



• Argus PRO, Argus LCM.

DB9 female > DIN 8 pin black connector, 2.4 m  
 Nellcor Oximax SpO2 Set • Nellcor Oximax Sensor



• REF: AEC-5193



• REF: AEC-5113



• Athena.

DB9 female > Round 10 socket purple connector, 2.4 m  
 Ohmeda SpO2 Set • Ohmeda Sensor



• Artema, Diascope 1 / 2 / 3, Gamme 8000.

DB9 female > Round 10 socket pink connector, 2.4 m  
 Nellcor SpO2 Set • Nellcor Sensor

S&W



• REF: AEC-5150



• REF: AEC-5174



• REF: AEC-5227



• REF: AEC-5240



• 90303B, 90309, 90351-0/6, 90465, 0466, 90489, 90651A-08, 90651-A, IM77, 90308, Scout.

DB9 female > Hypertac 7 pin black connector, 2.4 m  
 Nellcor SpO2 Set • Nellcor Sensor



• 1050, 1600, 1700, 90369, 90469, 91220-B, 904, 96, Ultraview ve Ultraview SL.

DB9 female > Ultraview 10 socket blue connector, 2.4 m  
 Nellcor SpO2 Set • Nellcor Sensor



• 1050, 1600, 1700, 90369, 90469, 91220-B, 904, 96, Ultraview ve Ultraview SL.

DB9 female > Ultraview 10 socket purple connector, 2.4 m  
 Nellcor Oximax SpO2 Set • Nellcor Oximax Sensor



• 90343/91343/96218 telemetry transmitters.

DB9 female > Hypertac mini 9 pin black connector, 0.6m  
 Nellcor SpO2 Set • Nellcor Sensor

Spacelabs



• REF: AEC-5176



• Monica 200/2000.

DB9 female > Redel 7 pin, 0° keying, blue cable collet, 2.4 m  
 Nellcor SpO2 Set • Nellcor Sensor

Spengler

▼ Sensor Side Connector

▼ Monitor Side Connector

**Triton**



• REF: AEC-5234

• MP6-03 AX/RX/TX.

DB9 female > Redel 9 pin, 0° keying, yellow cable collet, 2.4 m  
 Nellcor SpO2 Set • Nellcor Sensor

**Utas**



• REF: AEC-5255

• UM 300 - 10 / 15.

DB9 female > Redel 8 pin, 0° keying, green cable collet, 2.4 m  
 Nellcor Oximax SpO2 Set • Nellcor Oximax Sensor

**Üzümcü**



• REF: AEC-5238

• Visio Mod.

DB9 female > Redel 8 pin, 0° keying, blue cable collet, 2.4 m  
 Nellcor Oximax SpO2 Set • Nellcor Oximax Sensor



• REF: AEC-5243

• Visio.

DB9 female > Redel 8 pin, 40° kanallı, kırmızı cable collet, 2.4 m  
 Nellcor Oximax SpO2 Set • Nellcor Oximax Sensor

**Welch Allyn**



• REF: AEC-5212

• PIC30 / 40 / 50.

DB9 female > 7 pin, grey, 1.2 m  
 Nellcor Oximax SpO2 Set • Nellcor Oximax Sensor

**Zoll**



• REF: AEC-5225

• E, R, M ve AED serisi.

DB9 female > 3M 14 pole, 2.4 m  
 Masimo SpO2 Set • Masimo LNCS Sensor



• REF: AEC-5173

• E, R, M ve AED serisi.

DB9 female > 3M 14 pole, 2.4 m  
 Masimo SpO2 Set • Nellcor Sensor  
 Masimo'dan Nellcor Çevirici



• REF: AEC-5215

• E, R, M ve AED serisi.

Masimo 6 pole connector > 3M 14 pole, 2.4 m  
 Masimo SpO2 Set • Masimo LNOP Sensor



FMT is registered trademark of **Metko Ltd.**



### **Headquarter & Factory**

İvedik O.S.B. Ağaç İşleri Sanayi Sit.  
1354. Cad. 1358.Sok. No:9  
06378 Yenimahalle

**ANKARA / TÜRKİYE**

Tel (pbx) : +90 312 387 12 46  
Fax : +90 312 387 12 51

### **Branch**

Atatürk Mah. Sedef Cad. 38.Ada  
Ata Plaza 3-5 Blokları Kat:2 No:57  
34758 Ataşehir

**İSTANBUL / TÜRKİYE**

Tel (pbx) : +90 216 455 91 21  
Fax : +90 216 455 48 24

[www.metkold.com](http://www.metkold.com)

Other products, logos and company names mentioned herein may be trademarks of their respective owners and are not to be taken as an endorsement of affiliation with FMT®. The information in this catalogue has been carefully checked and it is believed to be accurate. Images in this catalogue are representative of items offered. Actual product may have slight visual differences. In the interest of continued product development, Metko reserves the right to make changes and improvements to this catalogue and the product it described any time, without notice or obligation.